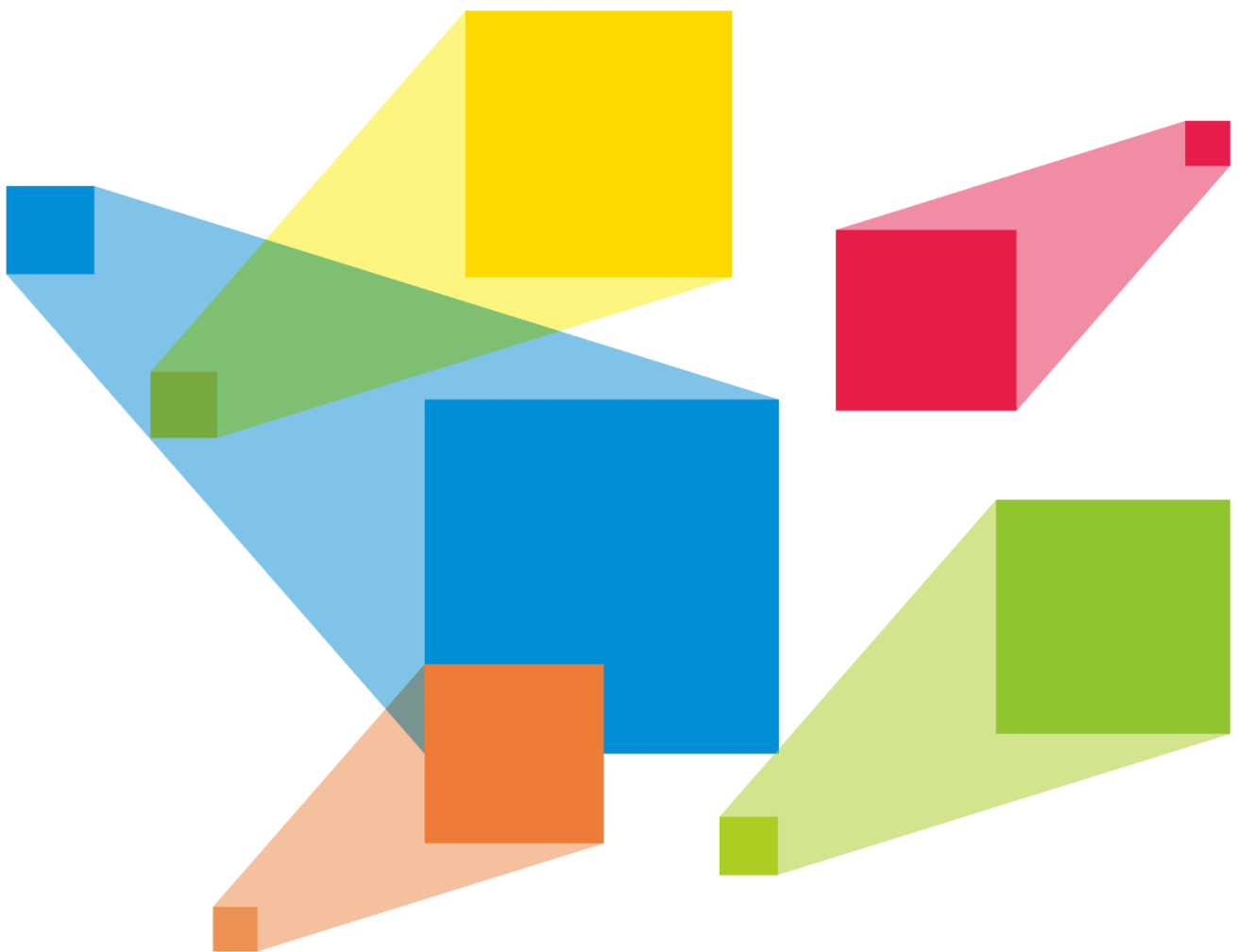


VICP

Visual Intelligent Control Platform



User Manual

Contents

1 Overview	3
1.1 Introduction	3
1.2 Obtaining	3
1.3 Installation Requirements	3
1.4 Installation.....	3
1.5 Authorization	3
2 Device Connection	4
3 Device Configuration	5
3.1 Configure Video Wall Splicers.....	5
3.2 Configure Media Servers	7
3.3 Configure Audio Controllers	10
3.4 Enter System	12
4 Multimedia	12
4.1 User Interface Introduction.....	12
4.2 Add Layers	13
4.3 Edit Layer Properties	14
4.4 Delete Layers.....	15
4.5 Switch Layer Media.....	15
4.6 Play Programs	15
4.7 Playback Control.....	15
4.8 Switch Media Servers	15
5 Screen.....	16
5.1 User Interface Introduction.....	17
5.2 Layer Operations	18
5.2.1 Add Layers	18
5.2.2 Adjust Layer Properties	18
5.2.3 Delete Layers	19
5.2.4 Switch Layer Input Sources.....	19
5.2.5 Reverse Control	20
5.3 Preset Operations	22
5.3.1 Load Presets	22
5.3.2 Preset Playback	23
5.4 Screen Control.....	24
5.5 Switch Video Wall Splicers.....	25
6 Environment	25
7 IPC	26
7.1 Add IPC.....	26
7.2 Control IPC	27
7.3 Edit IPC.....	28
8 Audio Control.....	28
8.1 Adjust Audio Volume	28
8.2 Configure Audio Matrix.....	29
9 Signage	30
9.1.1 Control Single Device.....	30
9.1.2 Control Multiple Devices	33
10 Reverse Control	33
11 Import Project to Other Systems.....	36
11.1 Import Projects to iPads	36

11.2 Import Projects to Android Systems 36

11.3 Import Projects to Windows Systems 37

12 FAQ 37

12.1 How to obtain the IP address of the media server? 37

12.2 How to get the port number of the media server? 38

1 Overview

1.1 Introduction

Visual Intelligent Control Platform (hereinafter referred to as VICP) is NovaStar's visualized control software for comprehensive management and control of screen display systems, multimedia playback and control systems, audio systems, and environment peripherals in various fixed installation application scenarios, such as exhibition halls, conference rooms or centers, media centers, command and control centers, and smart city data centers.

What you see is what you get

VICP allows fully-visualized operations, enabling more accurate and pertinent on-site control. In addition, its elaborated and interactive UI design brings a more friendly, simple and smooth using experience, thus providing users with a highly smart and efficient operating environment.

Everything is under your control

Through the perfect integration of NovaStar's video wall splicers, media servers, digital audio processing systems and intelligent central control units, VICP can realize all-round device management and control operations simply on a tablet or Kiosk, such as input signal switching, preset switching, screen brightness adjustment, device power on/off, lighting, curtains, audio, air conditioning and camera control, and more.

1.2 Obtaining

VICP supports tablet PC (iOS, Android OS and HarmonyOS) installation and Windows installation.

- For tablet PCs: Search for VICP in Apple or Android app store, or HUAWEI AppGallery to download and install the software.
- Windows OS: Obtain the package from your sales engineer or technical support engineer.

1.3 Installation Requirements

Tablet PC

- Resolution: 1024x768 or above
- System requirements:
 - iOS: iPadOS 14.4 or later, 2GB or above
 - Android: Android 10.0 or later, 4GB or above
 - Harmony: HarmonyOS 2.0 or later, 4GB or above

Windows System

- Processor: 9th Generation Intel® Core™ i5 Processor or above
- Memory: 8GB or above
- Hard disk space: 256G or above
- OS: Windows 10 64-bit or above

1.4 Installation

VICP is installed in the same way as an ordinary software. Follow the instructions to complete the installation.

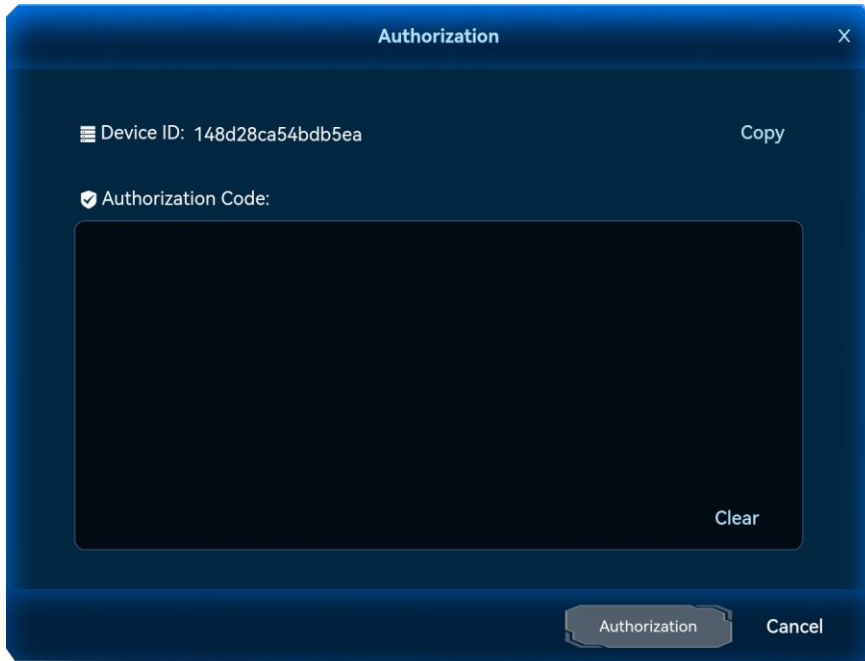
1.5 Authorization

Step 1 Run the software.

Step 2 Tap **Enter system** to log in to the system.

Step 3 Tap  at the top right and then tap **Authorization** to open the authorization window.

Figure 1-1 Authorization

**Note:**

You can also tap **Unauthorized** at the bottom to open the authorization window.

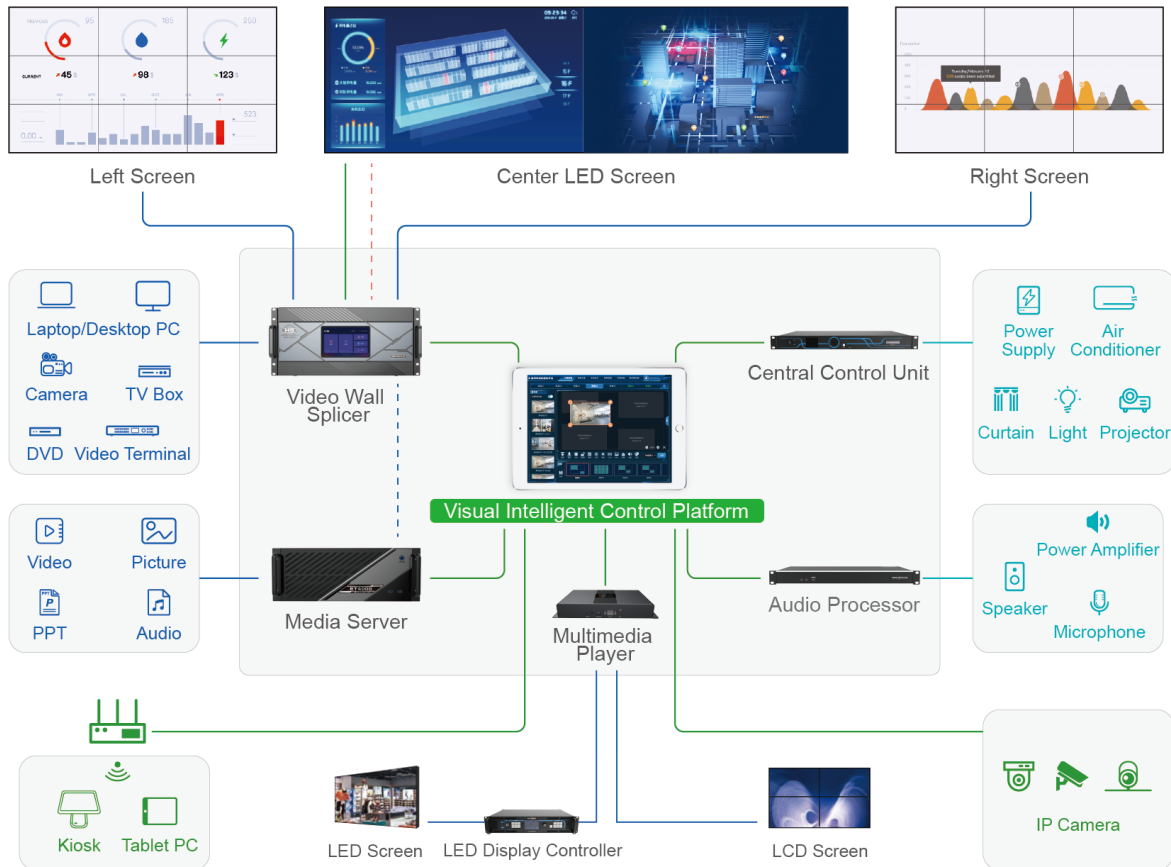
- Step 4 Send **Device ID** shown here to your sales.
- Step 5 Obtain the authorization code from your sales, and fill in the code in the text box.
- Step 6 Tap **Authorization** to complete the authorization.

2 Device Connection

Before using VICP to control and manage the devices mentioned above, make the connections between the tablet PC and other devices first.

As shown in the below figure, you need to connect the tablet PC, video wall splicer, media server, central control unit and audio processor to the same router, and make sure they are all on the same network segment.

Figure 2-1 Hardware connections



3 Device Configuration

Note:

The software pictures given in this guide are used for illustration purposes only. The actual user interface may vary slightly due to product enhancement. The content of the pictures can be slightly different from reality, such as the media files, form and position of software windows and more.

Add all the desired devices on the current network to VICP for device control and switching.

3.1 Configure Video Wall Splicers

Add the desired H series video wall splicers on the current network to VICP and then perform the device control and switching.

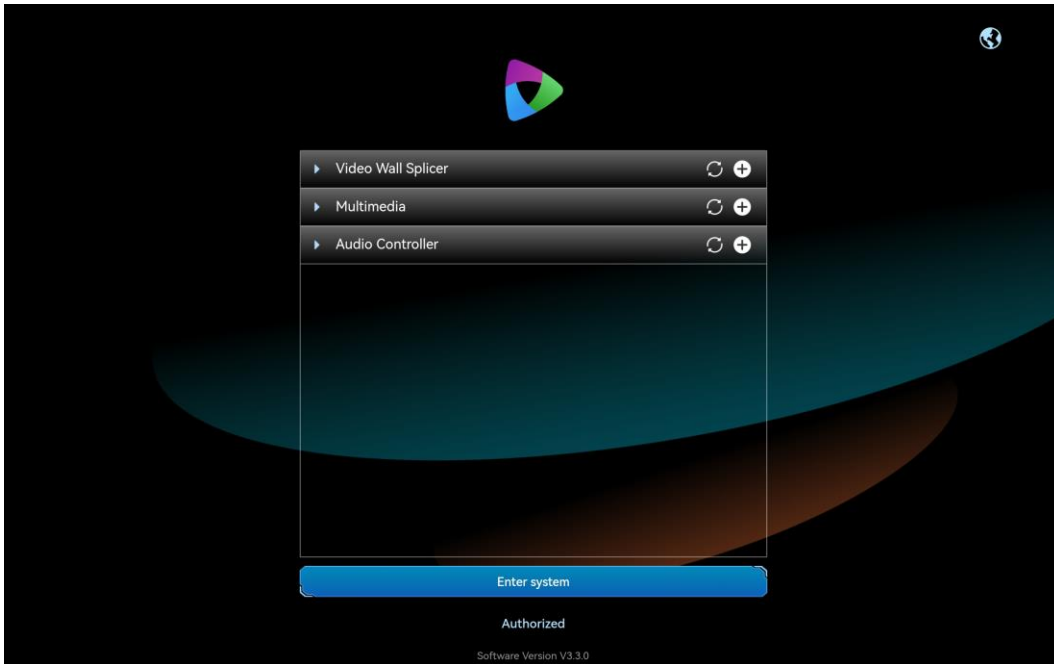
Prerequisites

- You must have connected the H series video splicers to the network.
- You must have obtained the IP addresses of the H series splicers.
- You must have obtained the user name and password for logging in to each H series splicer.
The default user name and password are both "admin".

Operating Procedure

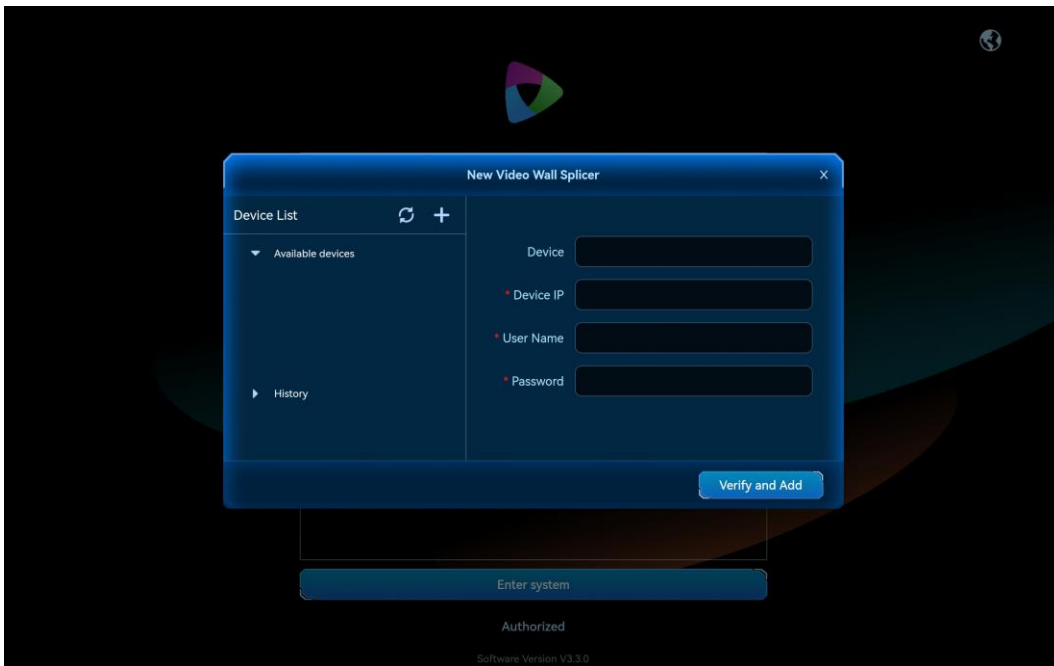
Step 1 Tap **VICP** to run the app.

Figure 3-1 Login interface



Step 2 Tap **+** next to **Video Wall Splicer** to add a new splicer.

Figure 3-2 Add video wall splicers



The system will automatically search for all the video wall splicers on the current network and show their IP addresses in the **Available devices** list on the left.

Step 3 Select the desired IP address and it will be shown in the **Device IP** text box on the right.

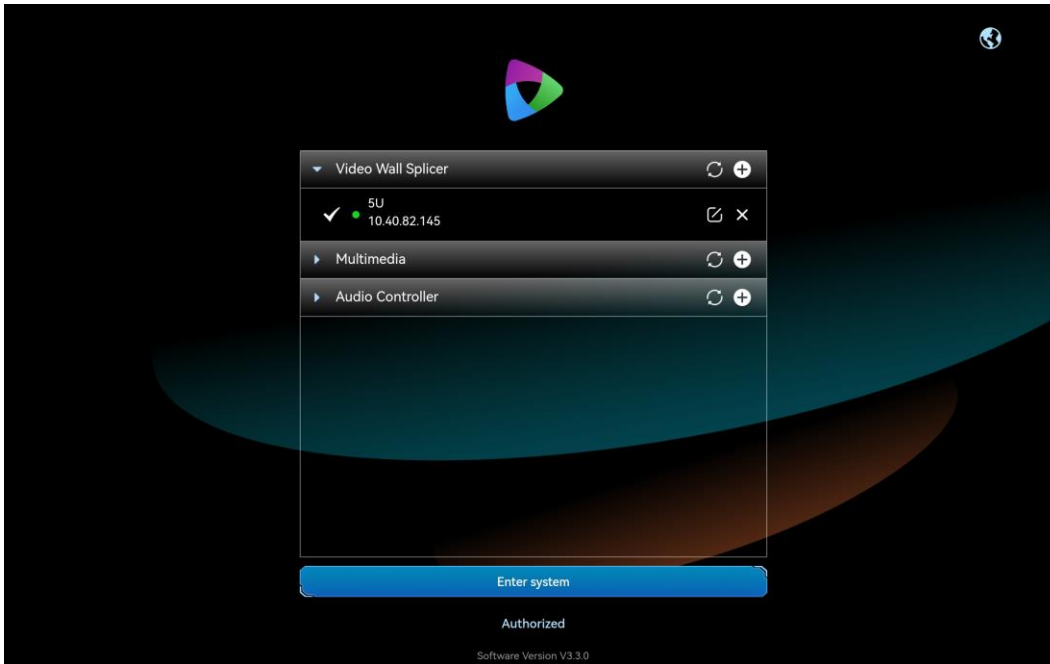
Step 4 Enter a name for the new splicer next to **Device**.

The name supports at most 20 English letters, numbers and special characters. It is recommended to use a name that is easy to identify.





Step 5 Enter the user name and password respectively in the text boxes next to **User Name** and **Password**.

Step 6 Tap **Verify and Add**. After a successful verification, your device is listed in the **Video Wall Splicer** list.

Figure 3-3 Device added successfully



Other Operations

- Tap  next to the splicer name to edit the splicer info.
- Tap  next to the splicer name to delete the splicer.
- Status descriptions:
 -  : The device is online.
 -  : The device is offline.

3.2 Configure Media Servers

Add all the desired media servers on the current network to VICP and then perform the device control and switching.

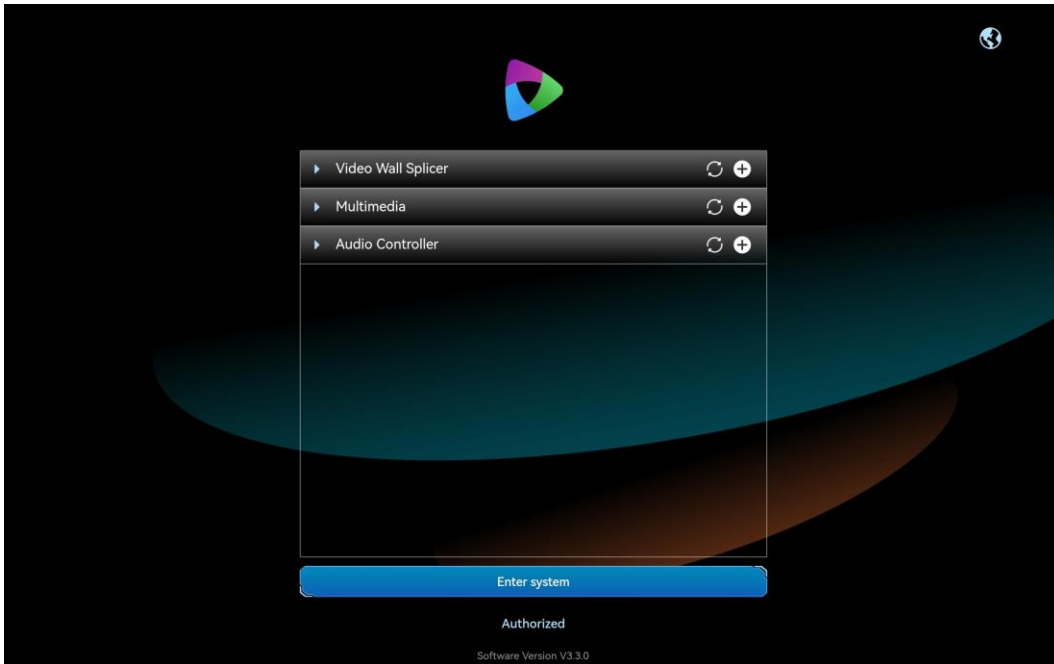
Prerequisites

- You must have connected the media servers to the network.
- You must have obtained the IP addresses of the media servers. For how to obtain the IP address of a media server, please refer to [12.1 How to obtain the IP address of the media server?](#)
- You must have enabled the external control function of the media server and have obtained the port number for external control in the multimedia playback software that is built in the media server. For how to obtain the port number, please refer to [12.2 How to get the port number of the media server?](#)

Operating Procedure

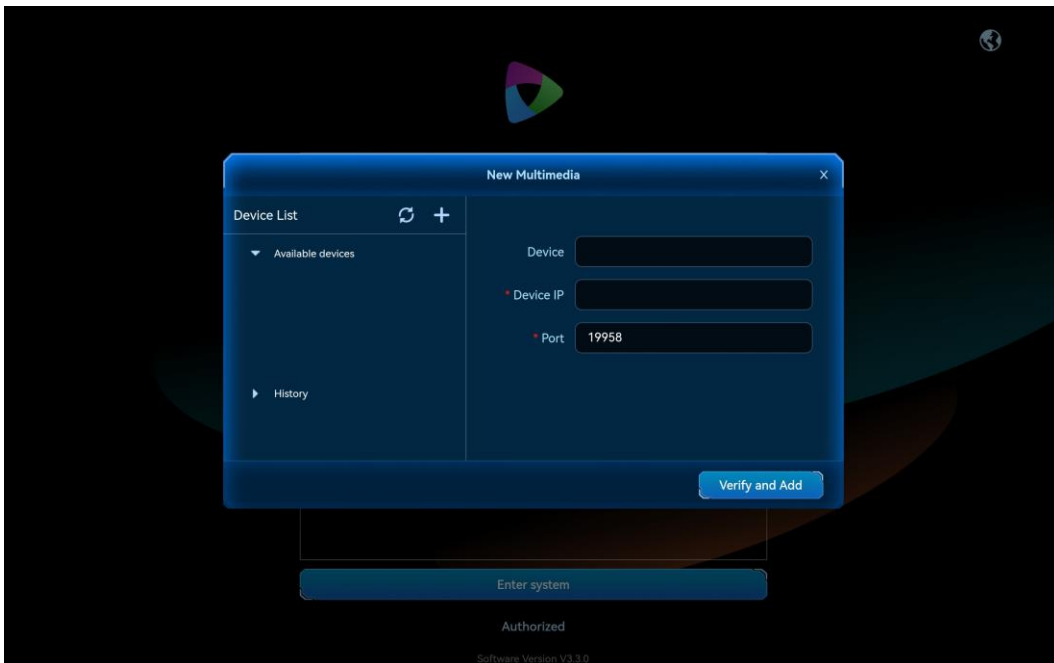
Step 1 Tap **VICP** to run the app.

Figure 3-4 Login interface



Step 2 Tap **+** next to **Multimedia** to add a new media server.

Figure 3-5 Add media servers



The system will automatically search for all the media servers on the current network and show their IP addresses in the **Available devices** list on the left.

Step 3 Select the desired IP address and it will be shown in the **Device IP** text box on the right.

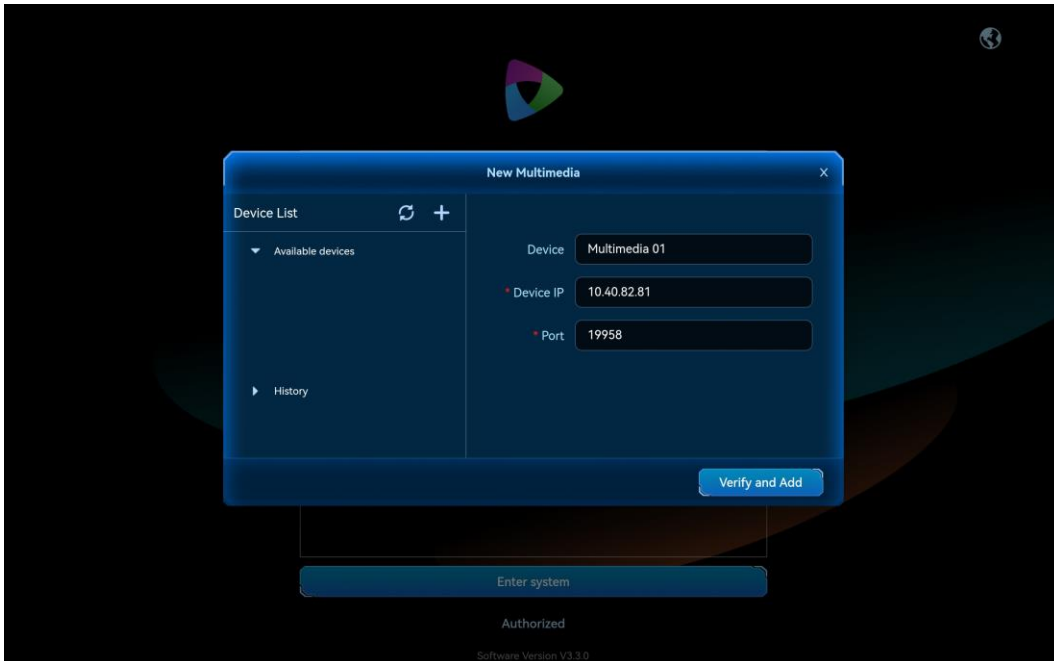
Step 4 Enter a name for the new media server next to **Device**.

The name supports at most 20 English letters, numbers and special characters. It is recommended to use a name that is easy to identify.

Step 5 Enter the port number for the external control function next to **Port**.

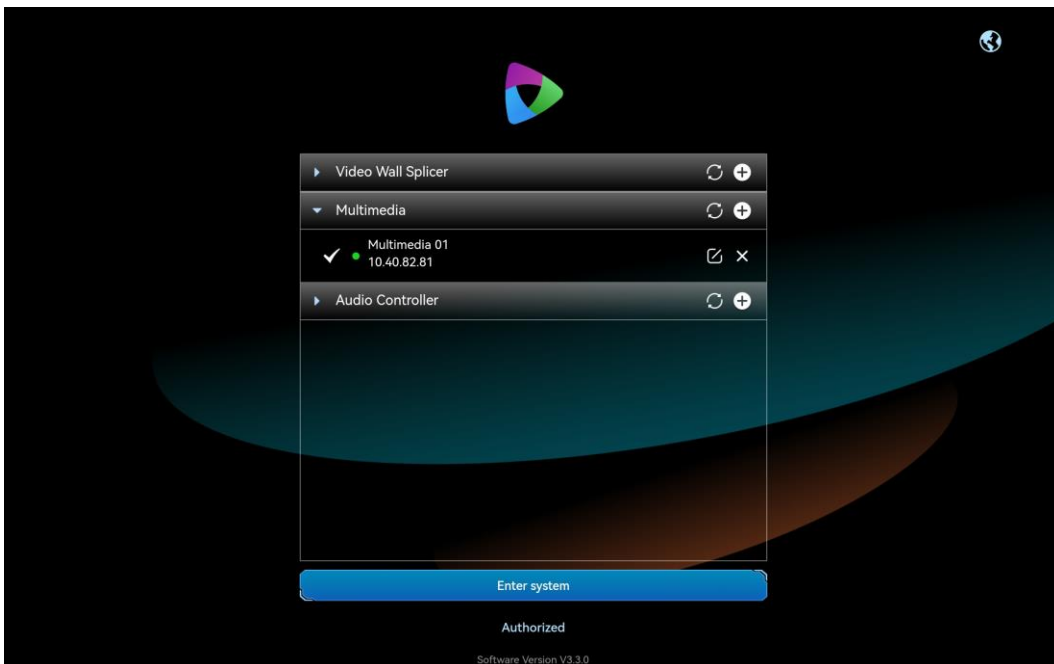
The default port number is 19958. If the port number has been changed before, fill in the new port number.

Figure 3-6 Fill in device information







Step 6 Tap **Verify and Add**. After a successful verification, your device is listed in the **Multimedia** list.

Figure 3-7 Device added successfully



Other Operations

- Tap  next to the media server name to edit the media server info.
- Tap  next to the media server name to delete the media server.
- Status descriptions:
 -  : The device is online.
 -  : The device is offline.

3.3 Configure Audio Controllers

Add the desired audio controllers on the current network to VICP and then perform the device control and switching.

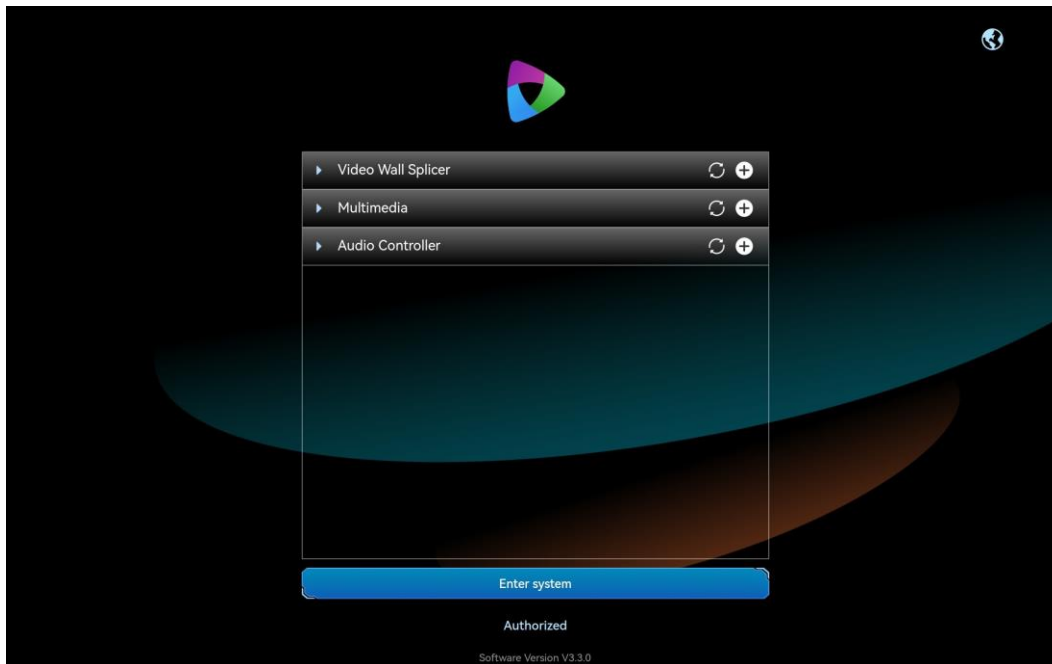
Prerequisites

You must have obtained the port info of the audio controller. The default port is 80.

Operating Procedure

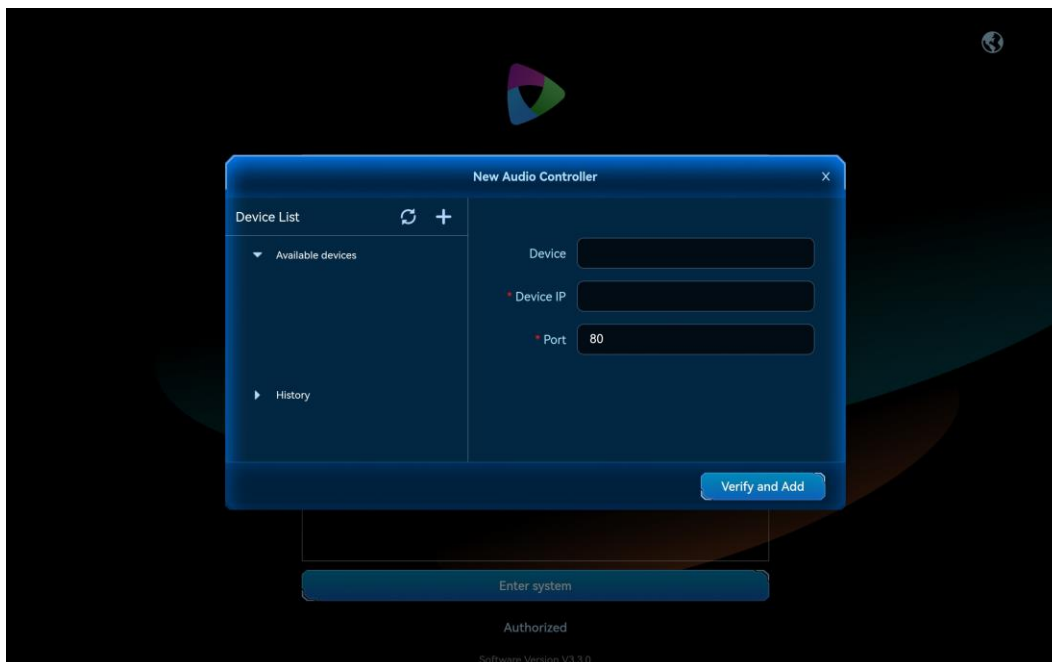
Step 1 Tap **VICP** to run the app.

Figure 3-8 Login interface



Step 2 Tap **+** next to **Audio Controller** to add a new audio controller.

Figure 3-9 Add audio controllers



Step 3 Enter a name for the new audio controller next to **Device**.

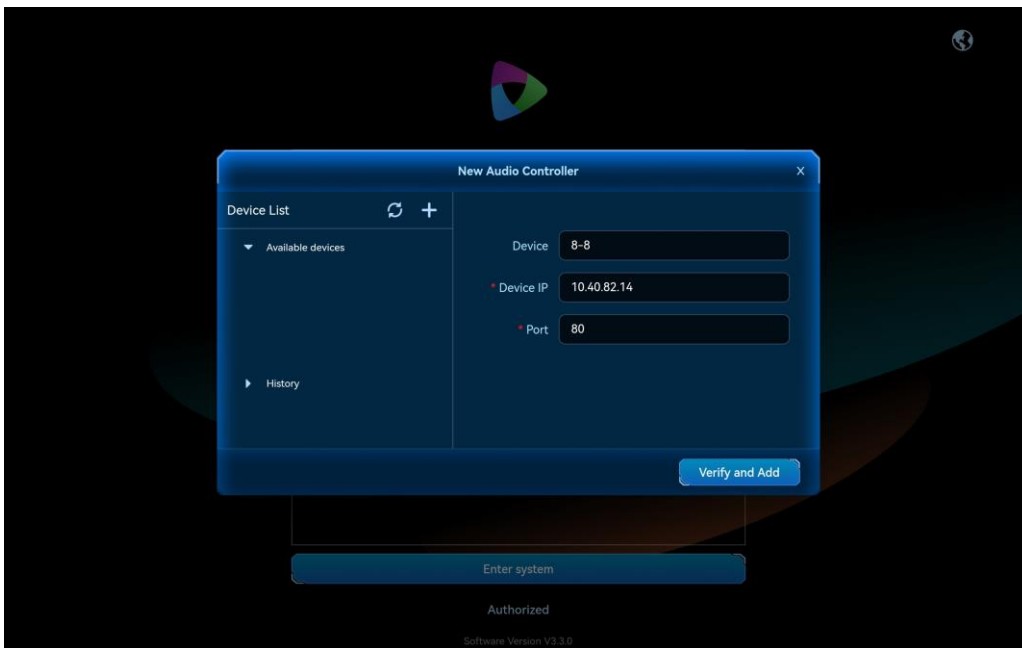
The name supports at most 20 English letters, numbers and special characters. It is recommended to use a name that is easy to identify.

Step 4 Enter the IP address of the audio controller next to **Device IP**.

Step 5 Enter the port number next to **Port**.

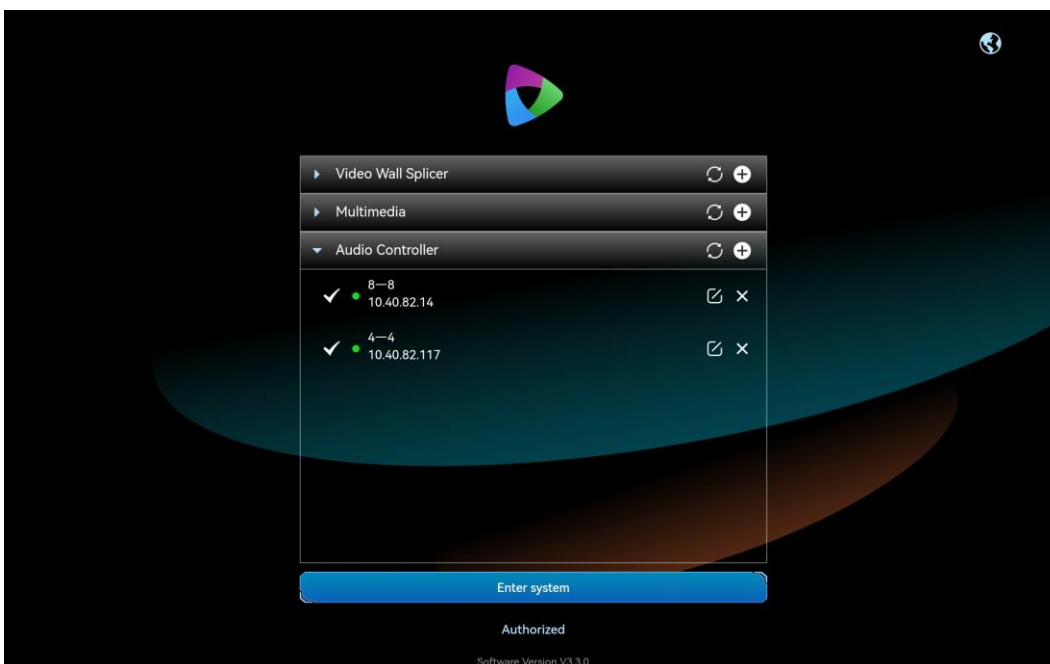
The default port number is 80. If the port number has been changed before, fill in the new port number.

Figure 3-10 Fill in audio controller info



Step 6 Tap **Verify and Add**. After a successful verification, your device is listed in the **Audio Controller** list.

Figure 3-11 Device added successfully



Other Operations

- Tap  next to the audio controller name to edit the related info.

- Tap **X** next to the audio controller name to delete the audio controller.
- Status descriptions:
 - ●: The device is online.
 - ●: The device is offline.

3.4 Enter System

VICP supports the control of video wall splicers, media servers, IP cameras and audio controllers. When you need to control the IP cameras, you do not have to add the cameras on the login interface and just enter the system directly. After VICP is started successfully and all the desired devices have been added, tap **Enter system** to log into the system.

4 Multimedia

After a successful login, tap **Multimedia** at the top to enter the multimedia playback control interface where you can perform the following operations.

- Add layers
- Adjust layer size and position
- Switch programs
- Control playback
- Switch media servers

4.1 User Interface Introduction

The multimedia control interface is shown below.

Figure 4-1 Main user interface

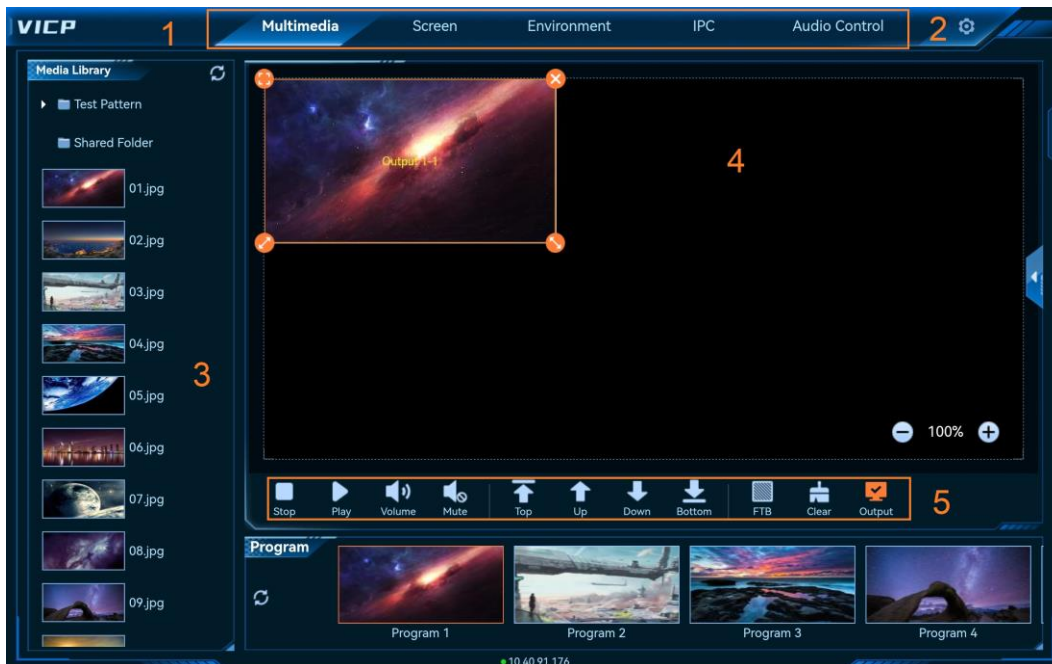


Table 4-1 User interface descriptions

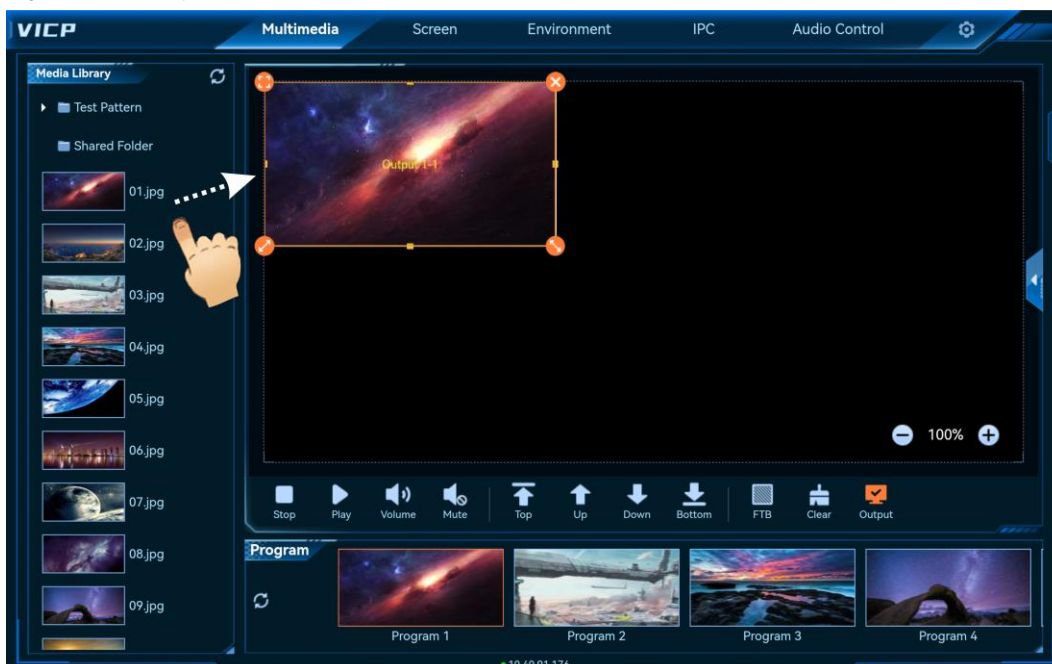
Area	Name	Description
1	Major function tabs	Major function modules are displayed here.

Area	Name	Description
		Tap one of them to enter the corresponding control interface. <ul style="list-style-type: none"> • Multimedia: Operate and control the multimedia playback. • Screen: Operate and control the screens loaded by the video wall splicers (H series). • Environment: Control the devices controlled by the central control unit. • IPC: Control the IP cameras on the current network. • Audio Control: Control the audio controllers. • Signage: Control the playback of the multimedia players. • Reverse Control: Remotely control the input source PC.
2	Settings	<ul style="list-style-type: none"> • Authorization: Authorize the system. • Customization: Customize your own menu. • Enable Sub Stream/Disable Sub Stream: Enable or disable the sub stream display. • Skin: Change the skin. Five skins are supported currently. • Language: Change the UI language. English and Simplified Chinese are supported currently. • Exit: Exit the system and return to the login interface.
3	Media library	Display all the imported media files.
4	Stage	Display the stage configuration and layer properties configuration.
5	Control	Control the program playback, such as stop, adjusting volume, turning pages for slides.
6	Program	Display and switch the programs.

4.2 Add Layers

- Step 1 In the **Program** area, tap the desired program.
- Step 2 In the **Media Library** area, select the desired media file by sliding up or down the media list.
- Step 3 Tap and hold the media and then drag it to the stage area to add or switch the media for the target layer.

Figure 4-2 Add layers







4.3 Edit Layer Properties

The layer properties include the layer size, position, priority and playback.

Quick Editing

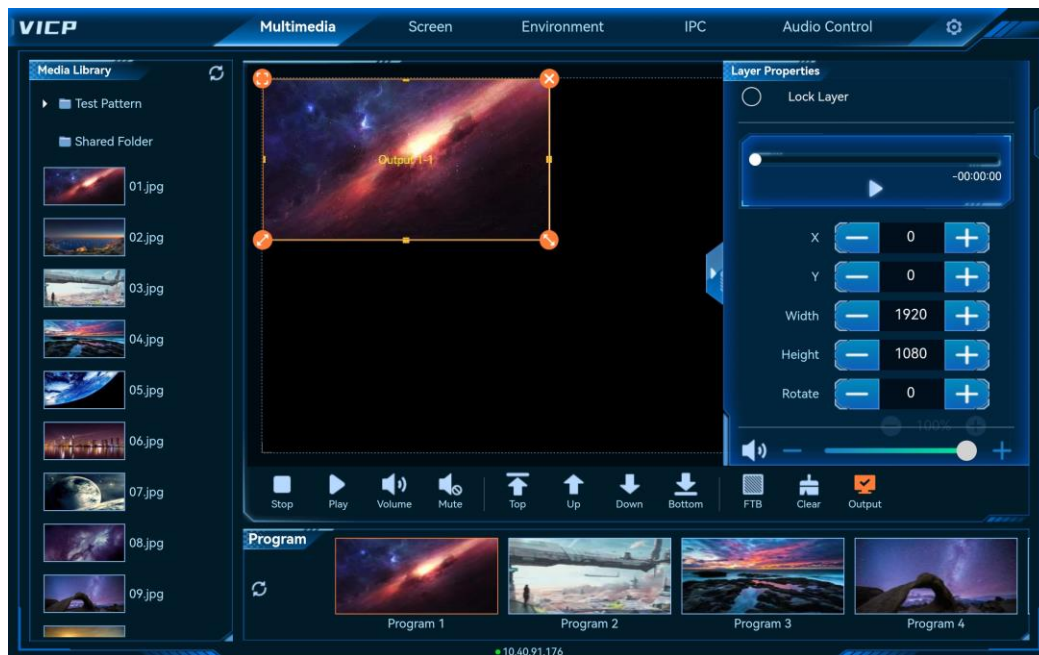
In the stage area, tap the target layer. After a layer is selected, four quick operation buttons appear at four corners of the layer.



- : Tap the icon to make the layer fill the output connector.
- : Tap and hold the icon, and then drag it to change the layer size. The position of the top left corner of the layer remains unchanged.
- : Tap and hold the icon, and then drag it to change the layer size. The position of the top right corner of the layer remains unchanged.
- : Tap the icon to delete the layer.
- Tap and hold the layer, and then drag it to quickly adjust its position.



Precise Editing

In the stage area, tap the desired layer and then tap  on the right edge to expand the layer properties pane.



Figure 4-3 Layer properties



- Playback control
 - Tap  or  to play the media or pause the media playback.
 - Drag the slider block to control the playback progress.
- Position and size adjustment

Adjust the position and size of the layer by either tapping  or  for fine adjustments or directly entering the exact values in the text boxes.

- X: Adjust the initial horizontal position of the layer.
- Y: Adjust the initial vertical position of the layer.
- Width: Adjust the layer width.


- Height: Adjust the layer height.
- Rotate: Rotate the layer image clockwise with the layer center as the rotation point. The value range is 0–360.
- Volume control
 - : Turn on the layer sound, and adjust the volume by either tapping +/- or dragging the slider block.
 - : Turn off the layer sound.
- Lock aspect ratio

Select whether to lock the aspect ratio of the selected layer during the adjustment.

4.4 Delete Layers

Step 1 In the **Program** area, tap the desired program.

Step 2 Tap the target layer.

Step 3 Tap  at the top right of the layer to delete it.

4.5 Switch Layer Media

Step 1 In the **Program** area, tap the target program.

Step 2 In the **Media Library** area, select the desired media file by sliding up or down the media list.

Step 3 Tap and hold the media and then drag it to the center of the target layer to replace the existing media.

4.6 Play Programs

In the **Program** area, tap the desired program to play and switch it.

4.7 Playback Control

- Stop: Stop the program playback.
- Play: Play the selected program.
- Suspend: Pause the program playback.
- Volume: Tap the icon to show the volume adjustment bar and then drag the slider block to adjust the volume.
- Mute: Turn on/off the sound of the selected program.
- Top: Bring the layer to the front.
- Up: Move the layer one level up.
- Down: Move the layer one level down.
- Bottom: Send the layer to the back.
- FTB: Make the program display fade to black.
- Previous: Tap the icon to view the previous slide.
When the media file is a PowerPoint file, this function icon is available.
- Next: Tap the icon to view the next slide.
When the media file is a PowerPoint file, this function icon is available.
- Clear: Clear all the layers in the selected program.
- Output: Enable or disable the media server outputs.

4.8 Switch Media Servers

After configuring the media servers on the login page, you can switch the media server directly on the main user interface without the need to exit the current server and reconfigure the new server.

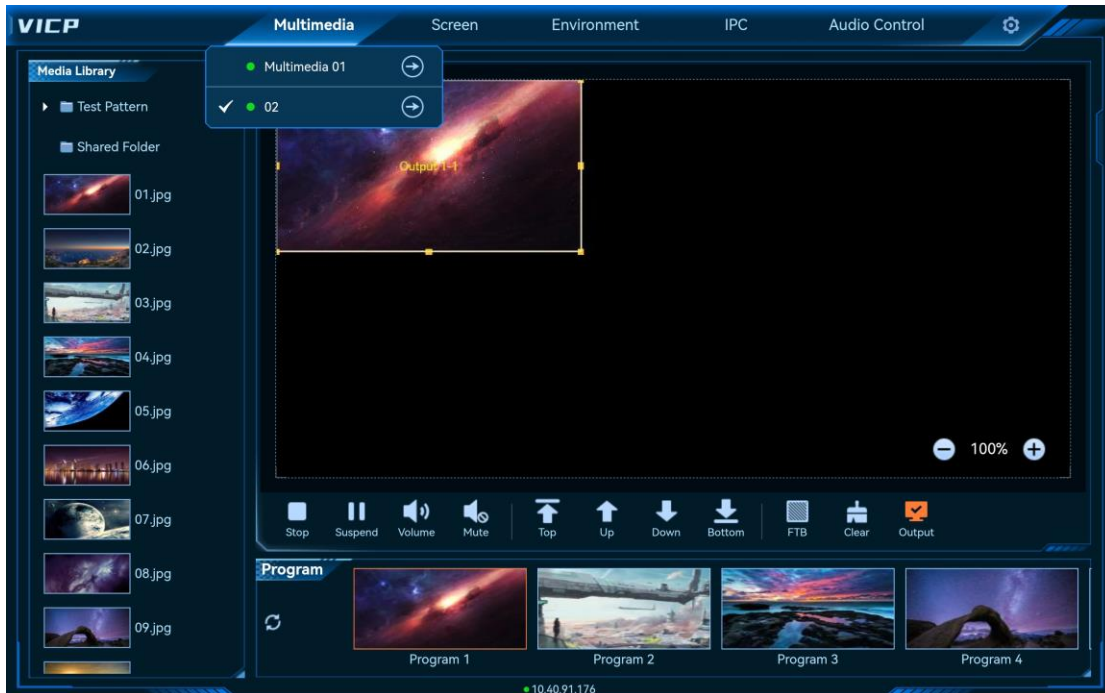
Prerequisites

You have configured the media servers in the **Multimedia** area on the login page.




Operating Procedure


Step 1 Tap **Multimedia** at the top on the main user interface to show the online media server list.

Figure 4-4 Media server list



Server status descriptions are as follows:

- : The media server is being operated.
- : The media server is online and ready for use.
- : The media server is offline and not ready for use.

Step 2 Tap the  icon to switch to the desired media server.

5 Screen

Tap **Screen** to enter the control interface of the video wall splicers.

5.1 User Interface Introduction

Figure 5-1 Main interface



Table 5-1 User interface descriptions

Area	Name	Description
1	Major function tabs	<p>Major function modules are displayed here.</p> <p>Tap one of them to enter the corresponding control interface.</p> <ul style="list-style-type: none"> • Multimedia: Operate and control the multimedia playback. • Screen: Operate and control the screens loaded by the video wall splicers (H series). • Environment: Control the devices controlled by the central control unit. • IPC: Control the IP cameras on the current network. • Audio Control: Control the audio controllers. • Signage: Control the playback of the multimedia players. • Reverse Control: Remotely control the input source PC.
2	Settings	<ul style="list-style-type: none"> • Authorization: Authorize the system. • Customization: Customize your own menu. • Enable Sub Stream/Disable Sub Stream: Enable or disable the sub stream display. • Skin: Change the skin. Five skins are supported currently. • Language: Change the UI language. English and Simplified Chinese are supported currently. • Exit: Exit the system and return to the login interface.
3	Screen	Display and switch the screens loaded by the video wall splicers.
4	Signal source	List all the available signals.
5	Screen editing area	<ul style="list-style-type: none"> • Display all the layer layout info. • Add and adjust the layers. • Switch the layer input sources.
6	Control	<ul style="list-style-type: none"> • Quickly adjust the layer layout.

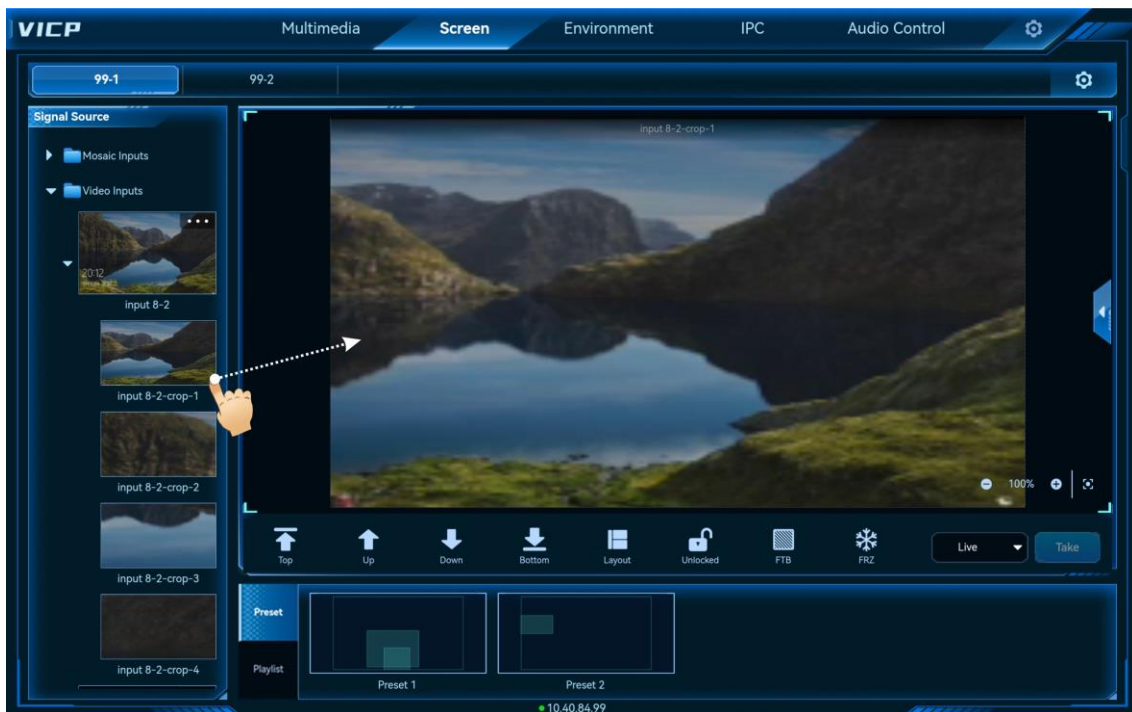
Area	Name	Description
		<ul style="list-style-type: none"> Control the screen locking and output display, and also quickly clear the layers. Control the FTB, freeze and brightness adjustment.
7	Preset and schedule	<ul style="list-style-type: none"> Preset: Display all the saved presets for the current screen. Schedule: Display all the created preset playlists for the current screen.

5.2 Layer Operations

5.2.1 Add Layers

Tap and drag an input source in the **Signal Source** area on the left and drag it to the screen to add a layer. When you tap the layer, four function icons appear at four corners of the layer, allowing for quick adjustment.

Figure 5-2 Add layers manually



- : Tap this icon to make the selected layer fill the screen.
- : Tap and hold the icon, and then drag it to change the layer size. The position of the top left corner of the layer remains unchanged.
- : Tap and hold the icon, and then drag it to change the layer size. The position of the top right corner of the layer remains unchanged.
- : Tap the icon to delete the layer.

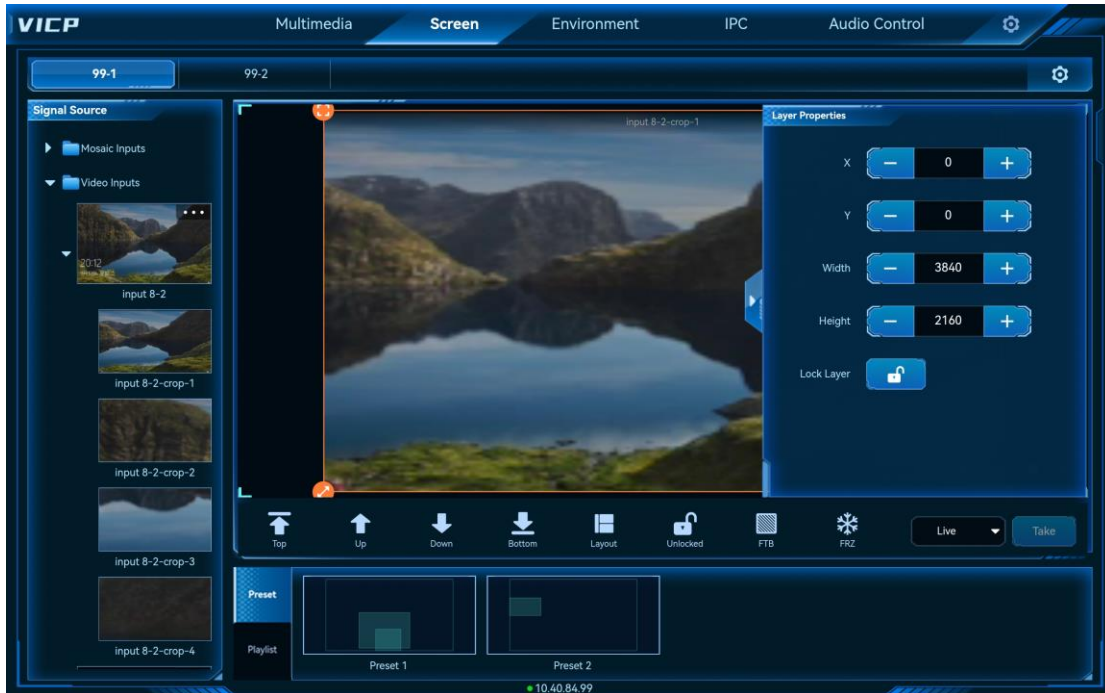
Note:

Double click the layer to make the layer fill the output connectors where it locates and crosses.

5.2.2 Adjust Layer Properties





After a layer is selected, tap on the right edge to expand the layer properties pane.

Figure 5-3 Layer properties





- X: Set the initial horizontal position of the layer, that is, the horizontal offset from the top left corner of the layer to the top left corner of the screen. The unit is the pixel.
- Y: Set the initial vertical position of the layer, that is, the vertical offset from the top left corner of the layer to the top left corner of the screen. The unit is the pixel.
- Width: Set the layer size in the horizontal direction. The unit is the pixel.
- Height: Set the layer size in the vertical direction. The unit is the pixel.
- Lock Layer: Set whether to lock the selected layer. After the layer is locked, any adjustment will not take effect.

Parameter Adjustment

- Tap  or  to increase or decrease the parameter value by one pixel at a time.
- Enter the parameter value directly between  and .

5.2.3 Delete Layers

- After you have loaded a preset or added a layer, tap the layer and four function icons appear at the corners of the layer. Tap  at the top right corner to delete the layer.
- Tap  in the control area to clear all the layers on the current screen.

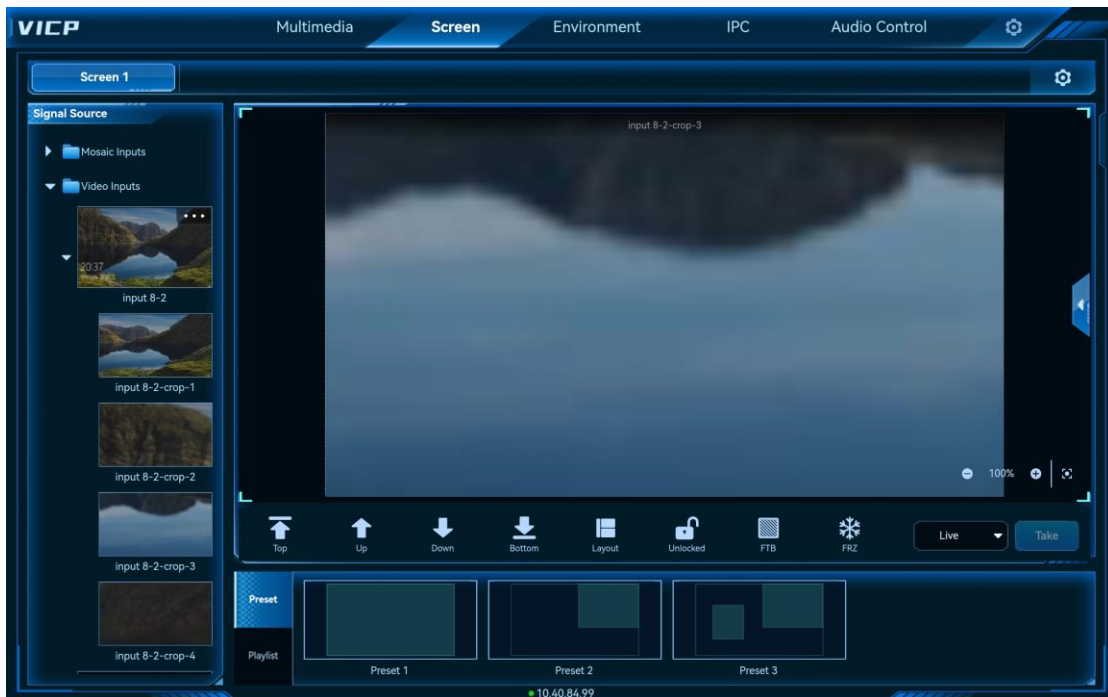
5.2.4 Switch Layer Input Sources

Slide the signal source list up and down, and then select the target source and drag it to the layer to switch the layer input source. The layer size remains unchanged.

Figure 5-4 Switch layer input sources



Figure 5-5 Input source switched successfully



5.2.5 Reverse Control

When the accessed signal is from your local computer, the reverse control function is supported, i.e., you can control the local computer in VICP.

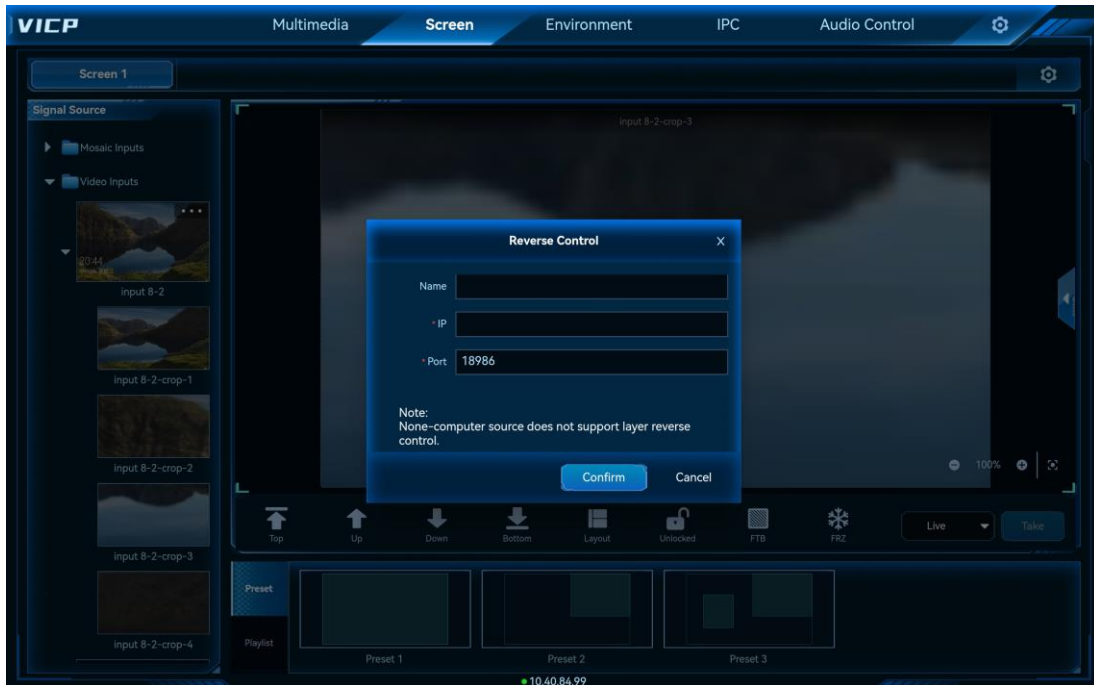
Prerequisites

The signal source must be a local signal (connected to your local device) and must come from a computer with the Windows OS installed.

Operating Procedure

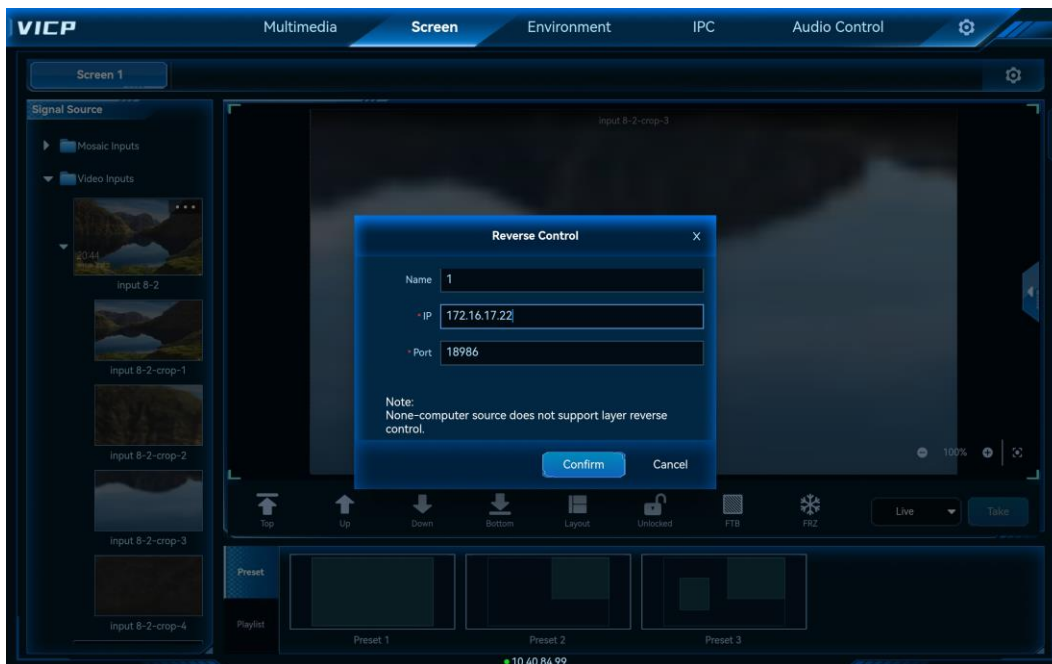
- Step 1 In the input source list on the left, tap ... at the top right of a desired input source to enter the reverse control interface.

Figure 5-6 Reverse control of input source



- Step 2 Enter the IP address of the computer where the signal source comes from. For the port No., use the default value.

Figure 5-7 Enter the computer IP address



- Step 3 Tap **Confirm**.
- Step 4 Tap a video wall name to select the desired video wall.
- Step 5 In the **Signal Source** list on the left, select the signal source that has been configured for reverse control, and then use this signal to add a layer.

Step 6 Tap the layer you have added.


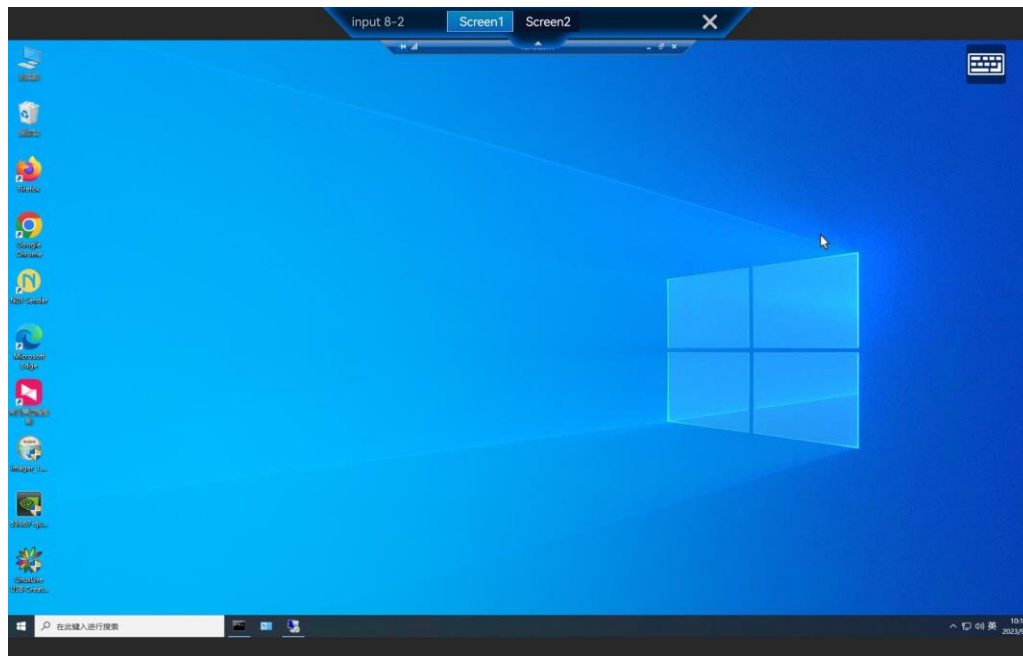
Step 7 Tap **Reverse Control**  in the screen control area and the system will connect to the signal source and show the desktop of your local computer. Enter the login password if required to log in to the local computer and perform the needed operations.

Figure 5-8 Reverse control



Tap **x** at the top to exit the reverse control interface.

5.3 Preset Operations

5.3.1 Load Presets

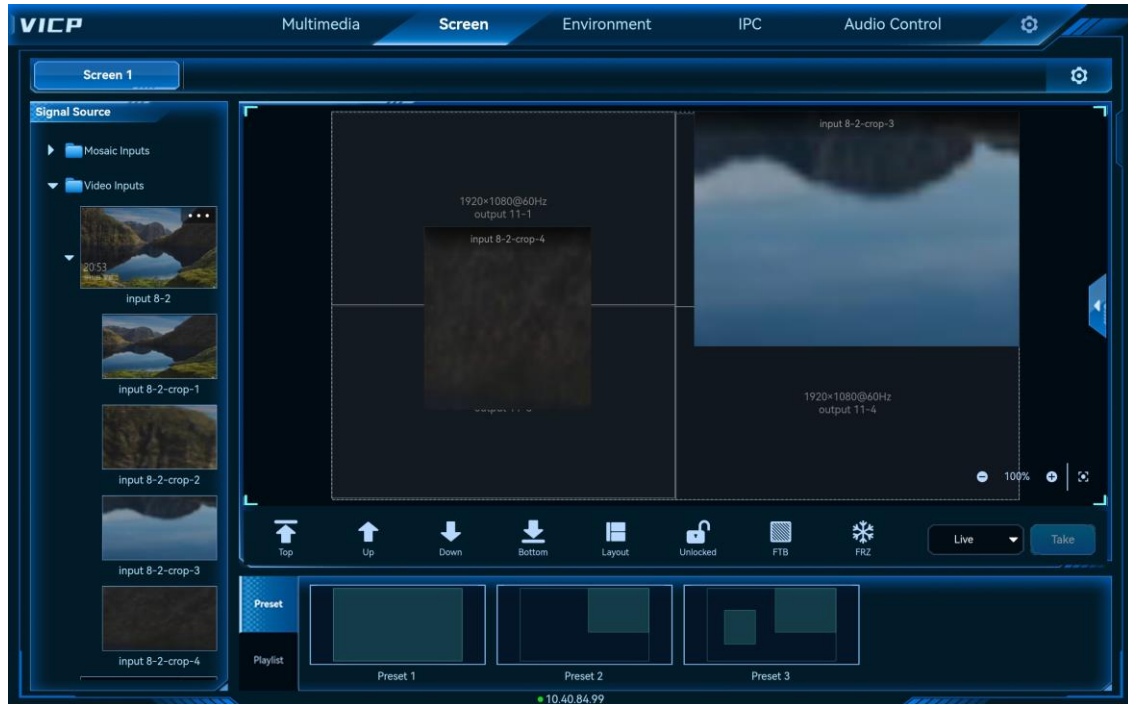
Prerequisites

You have saved a preset on the Web control page.

Operating Procedure

- Step 1 On the **Screen** interface, tap the desired screen to enter the corresponding screen control interface.
- Step 2 Tap **Preset** to show the preset list.
- Step 3 Tap the desired preset to load it.

Figure 5-9 Load presets

**Note:**

After a preset is loaded, you can select a layer and change its size and position, or switch the layer input source by tapping and dragging the desired source to the layer. All the changes you have made will not be saved to the preset.

5.3.2 Preset Playback

Prerequisites

You have added a preset playlist playback on the Web control page.

Operating Procedure


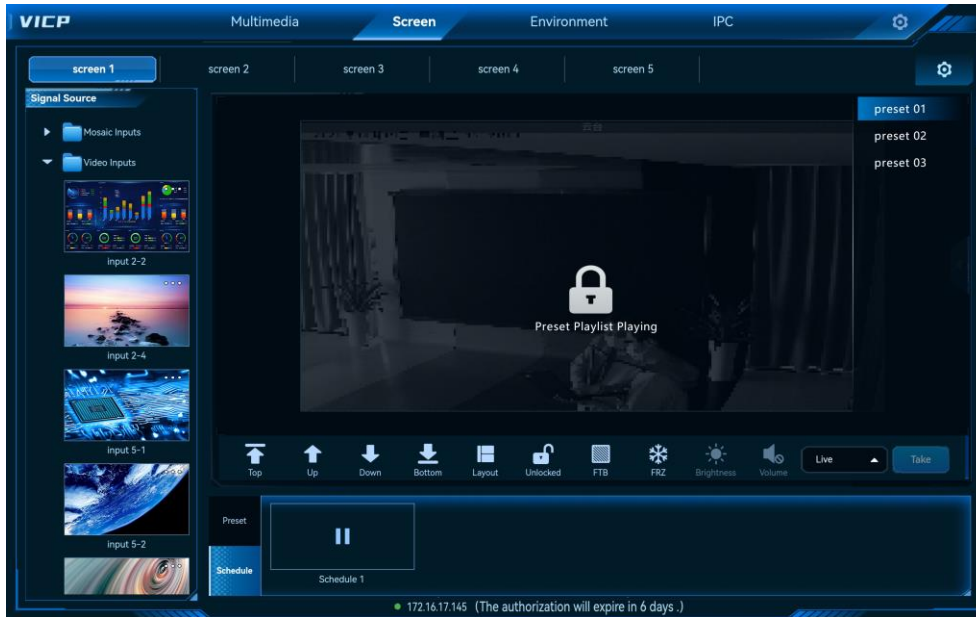













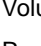
- Step 1 On the **Screen** interface, tap the desired screen to enter the corresponding screen control interface.
- Step 2 Tap **Schedule** to show the preset playback list.
- Step 3 Tap  on a preset playlist to play it.

Figure 5-10 Preset Playback



During the playback, the screen is locked automatically and no operations are allowed. Tap  to stop the playback and then you can perform other operations.

5.4 Screen Control

- : Bring the layer to the front.
- : Move the layer one level up.
- : Move the layer one level down.
- : Send the layer to the back.
- : Quickly add and arrange the layers with the selected layout.
- : Lock the current screen layers. When locked, the screen layers cannot be edited and changed.
- : Unlock the layers on the screen.
- : Make the screen fade to black.
- : Turn off the fade to black setting.
- : Freeze the output image.
- : Unfreeze the output image.
- : Adjust the output image brightness.
- : Clear all the layers on the current screen.
- Volume: Adjust the layer output volume.
- Reverse Control: When the signal source is from your local computer, control the computer where the signal comes from.
- Take: When **Pre-Edit** is selected, tap **Take** after the layer editing is completed to send the layer images to the screen.

5.5 Switch Video Wall Splicers

After configuring the video wall splicers on the login page, you can switch the splicers without the need to exit the current control and reconfigure the splicer.

Prerequisites

You have completed the configurations for the splicers in **Video Wall Splicer** on the login page.

Operating Procedure




Step 1 On the main user interface, tap **Screen** to enter the screen control interface.


Step 2 Tap **Screen** again to show the video wall splicer list.

Figure 5-11 Video wall splicer list



The splicer status descriptions are as follows:

- : The splicer is being operated.
- : The splicer is online and ready for use.
- : The splicer is offline and cannot be used.

Step 3 Tap the  icon next to the desired splicer to complete the switching.

6 Environment

On the main user interface, tap **Environment** to enter the environment control interface.

The environment interface allows you to control the lights, curtains, PTZ, TVs, audio volume and more via the intelligent central control unit.

Note:

Before using the environment control function, please contact NovaStar's technical support staff to produce the configuration files according to the on-site conditions in advance and import the configuration files to the system.

Figure 6-1 Environment control



7 IPC

The IPC function module allows you to control the IP cameras and view the camera images within a monitoring system, including adjusting the lens zoom (ZOOM), focus (FOCUS), aperture (IRIS) and performing the camera pan/tilt operations.

On the main user interface, tap **IPC** to enter the IP camera control interface.

Figure 7-1 IPC management



7.1 Add IPC

Step 1 Tap **+** on the left to open the IPC adding window.

Figure 7-2 Add IPC



- Name: The IPC name must contain at most 20 English letters, numbers and special characters. It is recommended to use a name that is easy to identify, so that the camera can be quickly distinguished by the name in the future.
- IP: Enter the IP address of the camera.
- Port: Enter the port number of the camera. The default port is **80**.
- User Name: Enter the user name for the login.
- Password: Enter the password matched with the entered user name.

Step 2 After all the blanks are filled, tap **Confirm** and the system will automatically connect and add the camera.







After the camera is added successfully, it appears in the IPC list on the left.




7.2 Control IPC

Step 1 Select the desired camera in the camera list.

The system interface displays the images captured by the current camera in real time.

Step 2 The camera control buttons are provided below the camera image. Tap the desired button to control the camera.

- : Adjust the camera shooting angle by tapping four buttons.
- Zoom: Adjust the focal length of the camera to obtain a clearer image.
 - : Zoom in the camera lens and the scene.
 - : Zoom out the camera lens and the scene.
- Focus: Set the camera focus to obtain a precise focus position to calibrate the focal length to ensure a clearer image.
 - : The nearby objects become clear and the distant ones gradually become blurred.
 - : The distant objects become clear and the nearby ones gradually become blurred.
- Aperture: Adjust the amount of light transmitted in the lens. If the aperture is too large, it will cause overexposure; if it is too small, it will cause underexposure.
 - : Decrease the aperture.

- : Increase the aperture.
- Speed: Adjust the automatic rotation speed of the pan or tilt.
 - : Decrease the speed.
 - : Increase the speed.

Step 3 (Optional) Tap **Save to Pattern** and select the desired pattern to save your settings as a pattern for easy use in the future.

7.3 Edit IPC

When the IPC parameters change, such as the camera IP, port, user name or password, the camera parameters need to be updated in time to ensure the correct control.

Tap ... next to the desired camera name and then select **Edit** to open the camera editing window.

Figure 7-3 Edit IPC



Change the parameters as needed and tap **Confirm** to complete the editing.

8 Audio Control

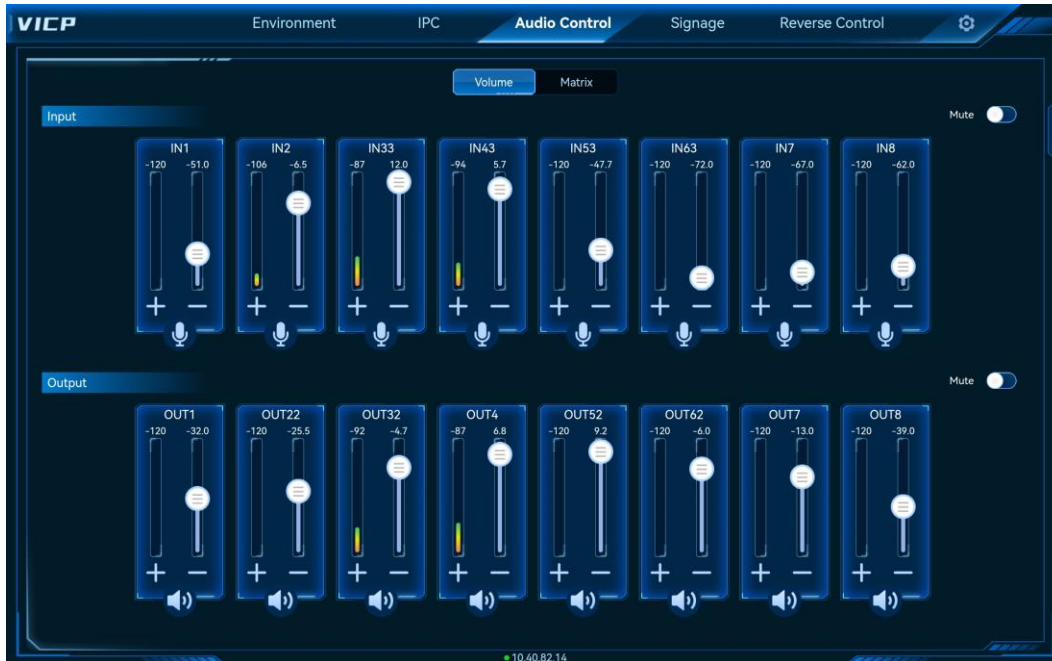
Adjust the system audio info, including the input and output volume as well as the audio matrix correspondence settings.

If you cannot see the **Audio Control** tab, just slide the menu bar to the left to show this menu tab.

8.1 Adjust Audio Volume

Step 1 Tap **Audio Control** to enter the audio control interface.

Figure 8-1 Audio volume



Step 2 Move the slider block up or down to increase or decrease the audio volume.

- Toggle the switch next to **Mute** in the **Input** or **Output** area to make the inputs or outputs no sound.
- Tap **>>** or **<<** to show the next or previous page.

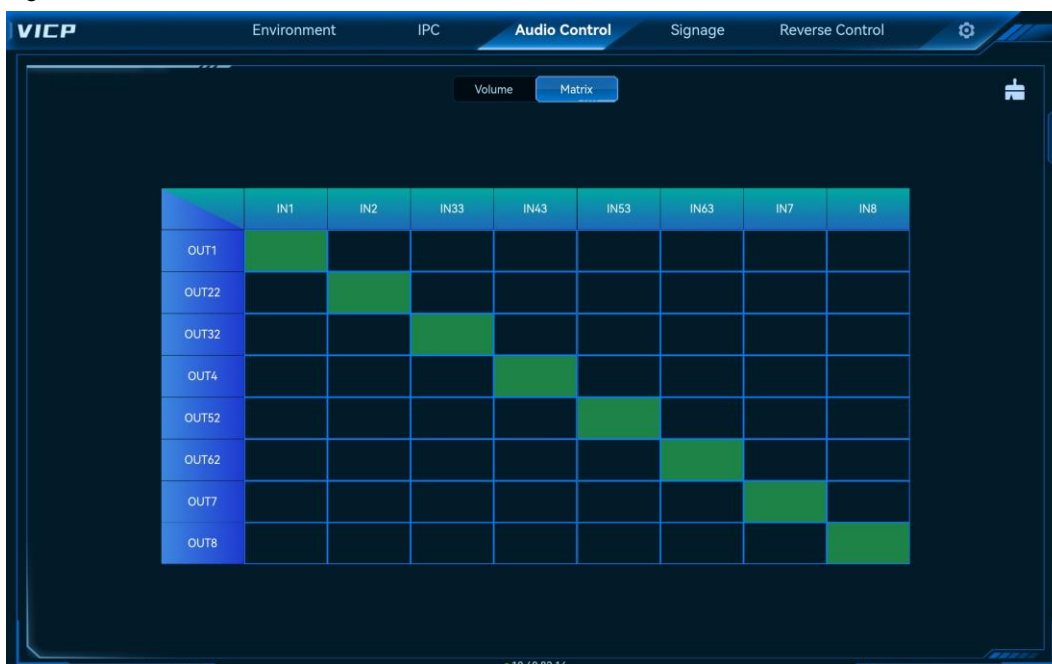
8.2 Configure Audio Matrix

Configure the correspondence relations between the input and output audio connectors.


Step 1 Tap **Audio Control** to enter the audio control interface.

Step 2 Tap **Matrix** to enter the audio matrix settings interface.

Figure 8-2 Audio matrix



Step 3 Double tap the matrix cells to relate or unrelate the inputs with the outputs.

Tap  at the top right to delete all the relations.

9 Signage

VICP allows you to perform the playback control over the multimedia players and Kompas FX0 on the current network segment.

Prerequisites

- The multimedia player or Kompas FX0 and VICP are on the same network segment.
- You have published the programs and made the program schedules via the multimedia player.
- You have obtained the user name and password for logging into the player. The default user name is "admin" and the default password is "123456".

9.1.1 Control Single Device

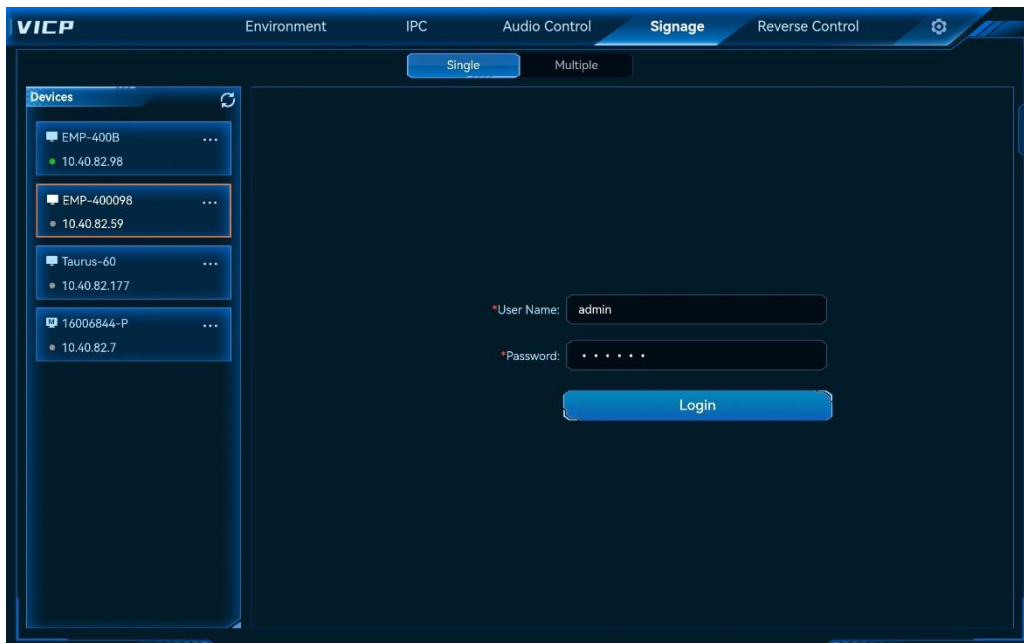
Step 1 Slide the menu bar to show this menu tab.

Step 2 Tap it to enter the signage interface.

Step 3 Tap the desired signage multimedia player in the left list.

The system searches for all the available players on the current network segment and list them here.

Figure 9-1 Signage



In the device list on the left, the icon next to the device name indicates the device type.

-  : Multimedia player
-  : Kompas FX0

Step 4 Fill in the user name and password, and then tap **Login**.

Note:

Before you control the multimedia player, login verification is required.

Step 5 After a successful login, all the programs of the current multimedia player are displayed on the right.

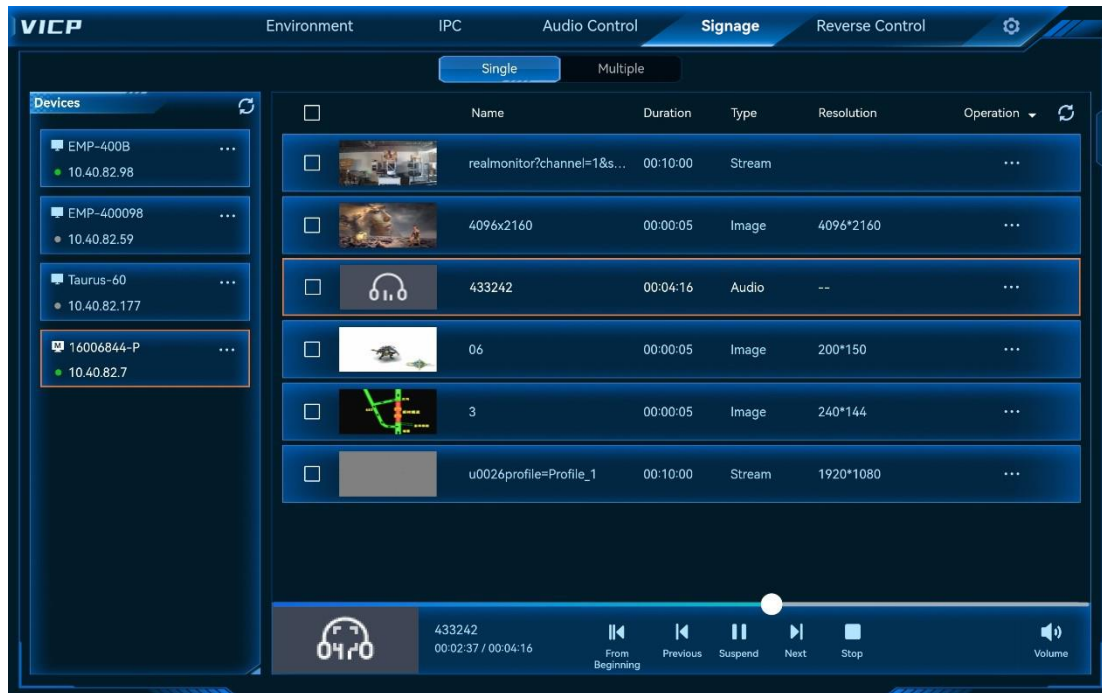
Figure 9-2 Multimedia players




- Tap **Schedule** to show the detailed schedule of the program.
- Use the icons at the bottom to control the program playback.
 - Stop: Stop the program playback.
 - Pause: Pause the program playback.
 - Play: Play the selected program.
 - First Slide: Jump to the first slide. This icon is available when the program type is a PowerPoint file.
 - Previous: Jump to the previous slide. This icon is available when the program type is a PowerPoint file.
 - Next: Jump to the next slide. This icon is available when the program type is a PowerPoint file.
 - Last Slide: Jump to the last slide. This icon is available when the program type is a PowerPoint file.
- Tap **⋮** next to the program and select **Delete** to delete the current program.
- Tap **⋮** next to the multimedia player to perform related operations.
 - Rename: Change the player name displayed in the system.
 - Delete: Delete the selected player.
 - Exit: Once you have logged in to this player, you can log out of the player. After that, you will not be able to control the player.


Tap **↻** to refresh the player list or program list to synchronize the players and programs on the current network segment.

Figure 9-3 Kompass FX0






Adjust Media Sequence

- Individual operation: Adjust the sequence of a single media.
 - Tap and hold the desired media, and then move it to the target position to quickly adjust the sequence.
 - Tap  next to the desired media to perform the related operations. The supported operations include **Top**, **Bottom** and **Delete**.
- Batch operations: Check the boxes next to the desired media, and then tap **Operation** in the title bar to perform the following operations.
 - Batch Move Up: Move all the selected files up.
 - Batch Move Down: Move all the selected files down.
 - Batch Bring to Front: Move all the selected files to the top of the media list.
 - Batch Send to Back: Move all the selected files to the bottom of the media list.
 - Batch Delete: Batch delete all the selected files.

After you complete the operations, tap  at the top right corner to view the new media sequence.

Control Playback

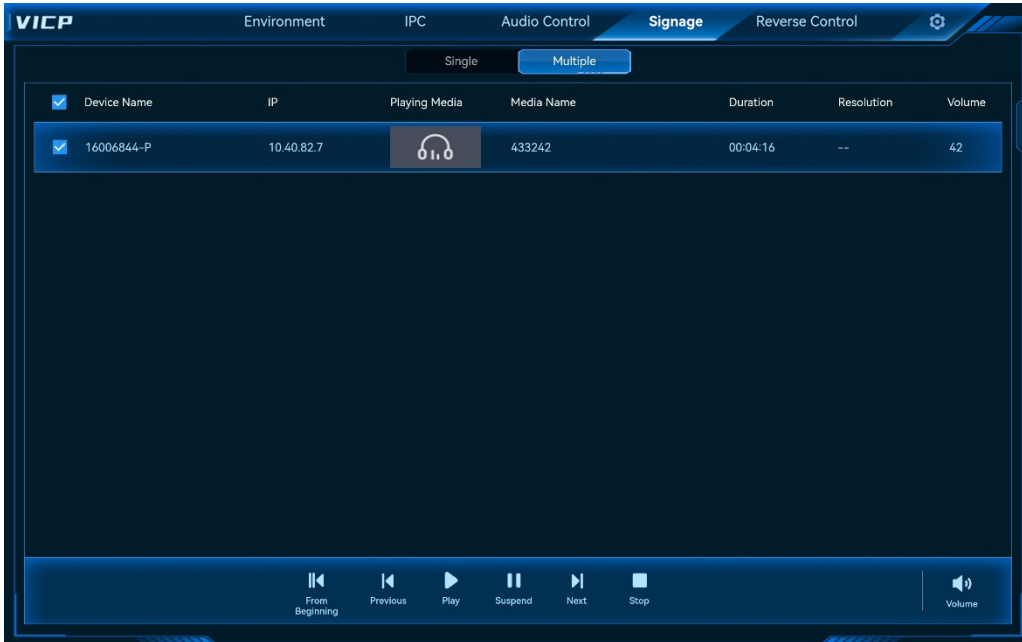
- Play: Play the media.
- Pause: Pause the media playback.
- Stop: Stop the media playback.
- From Beginning: Play the first media in the media library.
- Previous: Play the previous media of the current one.
- Next: Play the next media of the current one.
- Tap **Volume** at the bottom right corner to show the volume adjustment menu.
 - : Tap this icon or drag the slider block to the left to decrease the volume.
 - : Tap this icon or drag the slider block to the right to increase the volume.
 - : Mute or unmute the sound of the media.
- Tap the media thumbnail at the bottom left of the playback control area to display the media in full screen.

9.1.2 Control Multiple Devices

This function supports the control of Kompass FX0 only.

Step 1 On the signage interface, tap **Multiple** to enter the multiple device control interface.

Figure 9-4 Control multiple devices



Step 2 Check the boxes next to the desired devices.

Step 3 Control the playback of the selected devices via the control icons at the bottom.

For detailed information about the playback control, please refer to [9.1.1 Control Single Device](#).

10 Reverse Control

Prerequisites

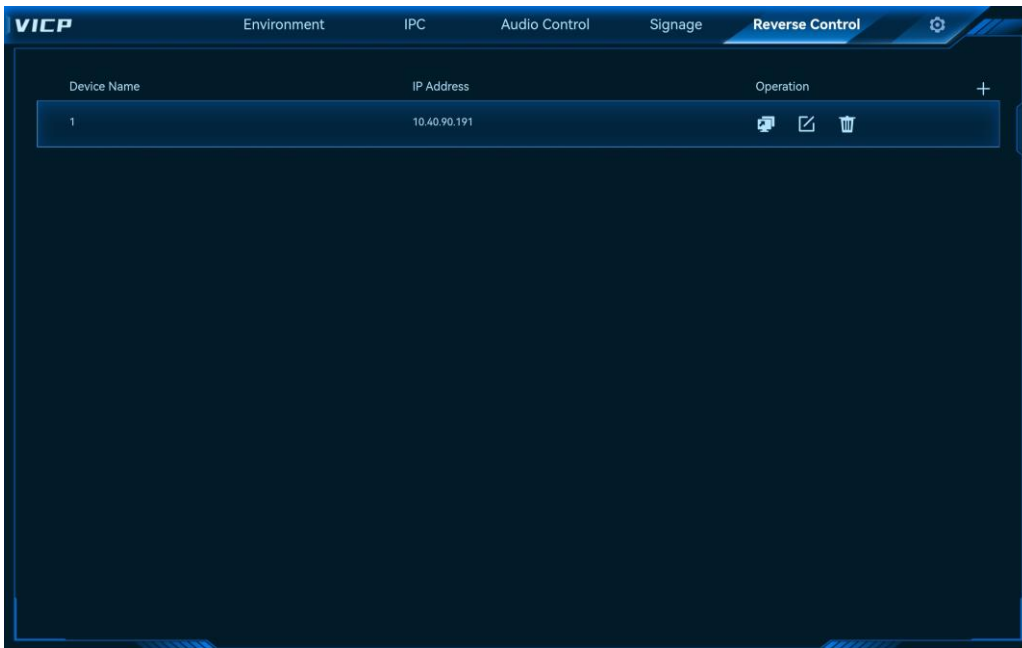
- The input source PC must have the program package installed. The installed program is shown as **KVM**.
The program package can be downloaded on the help page of VIMP. Before enabling the reverse control, you need to double click **KVM** on the input source PC to restart the remote control service.
- The input source PC and VIMP are on the same network.

Operating Procedure

Step 1 Slide the menu bar to show this menu tab.

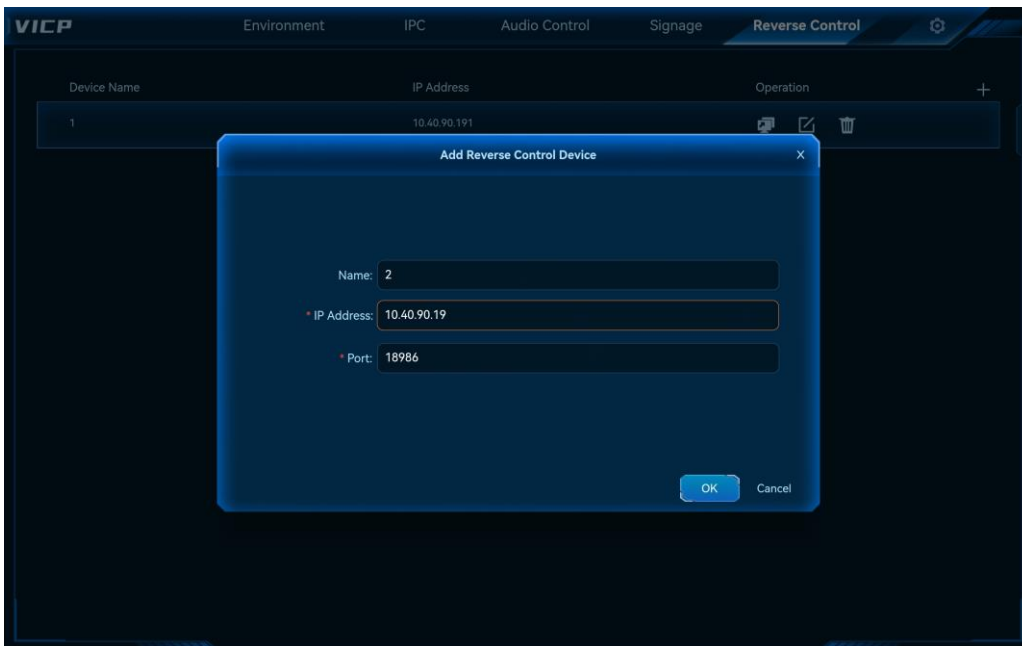
Step 2 Tap it to enter the reverse control interface.

Figure 10-1 Reverse control



Step 3 Click + at the top right corner to open the **Add Reverse Control Device** window.

Figure 10-2 Add reverse control devices

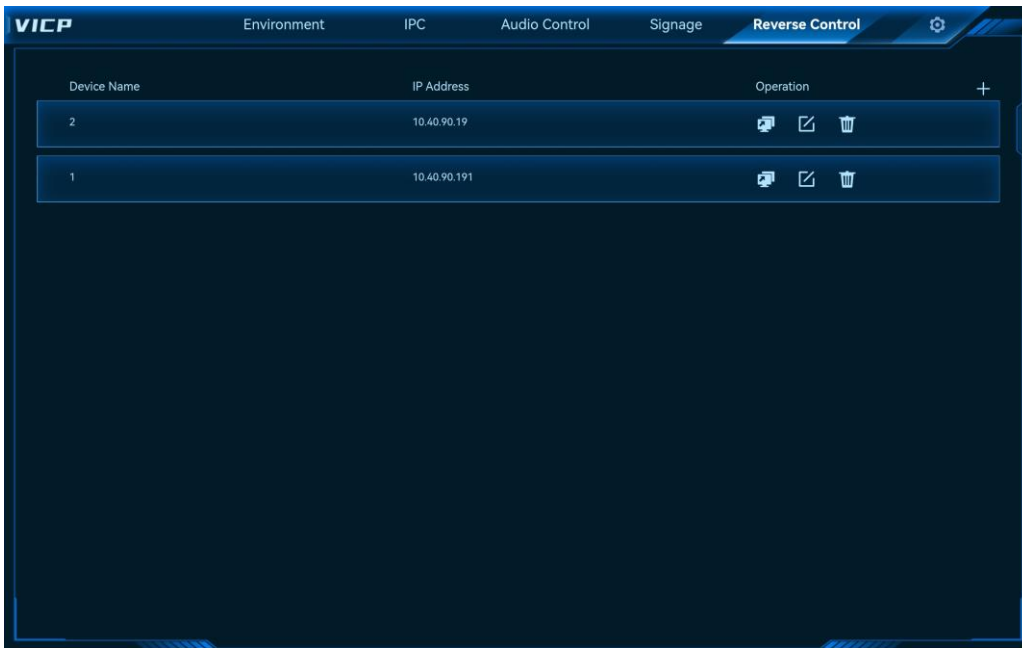



Step 4 Enter the device name, IP address and port number.



The default port number is 18986. If this port number is in use, you can change to another one.

Step 5 Tap **OK** to complete the adding.

Figure 10-3 Reverse control device added successfully



Step 6 Tap  to enter the desktop of the input source PC.

- Tap  to open the **Edit Reverse Control Device** window.
- Tap  to delete the target device.

11 Import Project to Other Systems

11.1 Import Projects to iPads

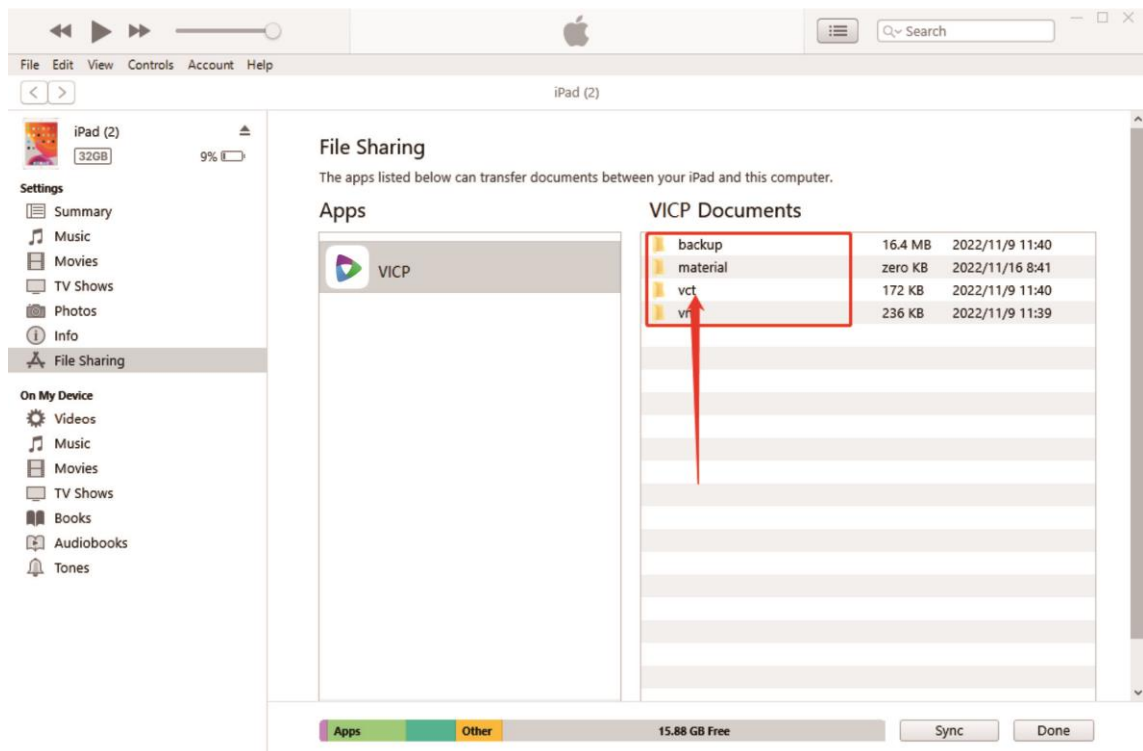
Prerequisites

You have installed iTunes on your computer.

Operating Procedure

- Step 1 Connect the iPad with your computer via a USB cable.
- Step 2 Create a folder named **vct** on your computer and copy the folders and files (**audio** folder, **material** folder, **resource** folder and **index.vct** file) in the local **VICP Projects** folder to the created **vct** folder.
- Step 3 Start iTunes on the computer.
- Step 4 Go to **Settings > File Sharing**.
- Step 5 Find **VICP** in the Apps area.
- Step 6 Click the created **vct** folder and drag it to the **VICP Documents** area.

Figure 11-1 Import projects to iPads



- Step 7 Close iTunes and restart VICP on the iPad. Go to the **Environment** interface to view the imported project files.

11.2 Import Projects to Android Systems

- Step 1 Go to **File Manager > Apps** on the Android device to enter the file manager interface.
- Step 2 Go to the internal storage folder and create a new folder named **vct**.
- Step 3 Connect the Android device with the computer via a USB cable.

- Step 4 Copy the folders and files (**audio** folder, **material** folder, **resource** folder and **index.vct** file) in the local **VICP Projects** folder to the created vct folder.
- Step 5 After the import is completed, restart VICP. Go to the **Environment** interface to view the imported project files.

11.3 Import Projects to Windows Systems

- Step 1 Go to **C:/Users/User/AppData/Roaming/NovaStar/VICP/** to enter the VICP folder.
- Step 2 Create a new folder and name it **vct**.
- Step 3 Copy the folders and files (**audio** folder, **material** folder, **resource** folder and **index.vct** file) in the local **VICP Projects** folder to the created vct folder.
- Step 4 After the import is completed, restart VICP. Go to the **Environment** interface to view the imported project files.

12 FAQ

12.1 How to obtain the IP address of the media server?

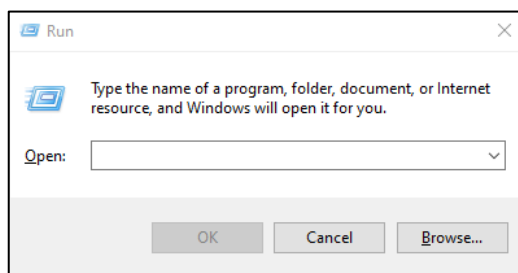
Problem

In VICP, you must configure the IP address of the media server first, but how to obtain the IP address of the media server on the current network?

Solution

- Step 1 On the media server, press the **Win+R** key combination to open the **Run** window.

Figure 12-1 Run window



- Step 2 Enter "**cmd**" and press the **Enter** key to open the command prompt.
- Step 3 Type "**ipconfig**" and press the **Enter** key, and the system will automatically display the media server IP address.

Figure 12-2 Media server IP

```

C:\WINDOWS\system32\cmd.exe
Microsoft Windows [Version 10.0.19041.1288]
(c) Microsoft Corporation. All rights reserved.

C:\Users\Admin>ipconfig

Windows IP Configuration

Ethernet adapter Ethernet:

    Connection-specific DNS Suffix . . . :
    Link-local IPv6 Address . . . . . : fe80::dcb:9a5f:aace:955a%11
    IPv4 Address. . . . . : 10.15.15.154
    Subnet Mask . . . . . : 255.255.255.0
    Default Gateway . . . . . :
  
```

The IPv4 address indicates the IP address of the media server.

12.2 How to get the port number of the media server?

Problem

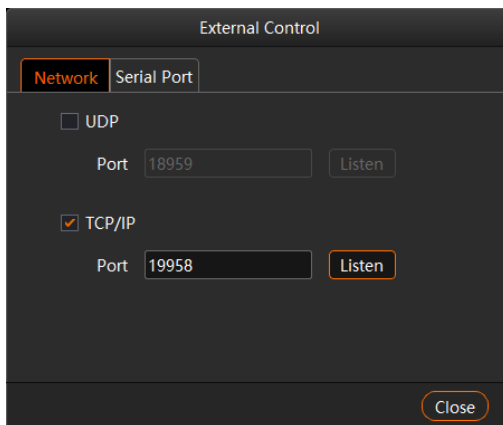
When VICP controls the media server, VICP requires the IP and port number of the media server, but how to obtain the port number of the Kompass FX3 or Kompass FX2 multimedia playback software in the media server?

Here we take Kompass FX3 as an example to illustrate.

Solution

- Step 1 Start Kompass FX3 and go to **Settings > External Control** to open the external control window.
- Step 2 Select the **Network** tab.
- Step 3 Check the box next to **TCP/IP** to enable the TCP/IP control.
- Step 4 In the text box next to **Port**, enter the port number.

Figure 12-3 Port settings



- Step 5 Click **Listen** to enable port listening.

If the entered port number is occupied, the message "**Listening failed because the port number is occupied.**" appears. Please re-enter a port number and continue the listening. When the listening succeeds, click **OK**.

- Step 6 Click **Close** to complete the port configuration.

Copyright © 2023 Xi'an NovaStar Tech Co., Ltd. All Rights Reserved.

No part of this document may be copied, reproduced, extracted or transmitted in any form or by any means without the prior written consent of Xi'an NovaStar Tech Co., Ltd.

Trademark

 is a trademark of Xi'an NovaStar Tech Co., Ltd.

Statement

Thank you for choosing NovaStar's product. This document is intended to help you understand and use the product. For accuracy and reliability, NovaStar may make improvements and/or changes to this document at any time and without notice. If you experience any problems in use or have any suggestions, please contact us via the contact information given in this document. We will do our best to solve any issues, as well as evaluate and implement any suggestions.

[Official website](http://www.novastar.tech)
www.novastar.tech

[Technical support](mailto:support@novastar.tech)
support@novastar.tech